



Command Line Parameter's for TOPS Pro

1. `-ini=(path of TOPSPRO.INI file) ex: -ini=c:\windows\standalone.ini`
2. `-dbpth=(locaton of TOPS Pro Data Directory) ex: -dbpath=c:\windows\standalone\data`

To use the command line parameters, you must have a shortcut for the TOPSPRO.EXE file. You can create a shortcut by Right-Click then Drag the TOPSPRO.EXE file out to the desktop while holding down your right mouse button. When you release the button, you can select "Create Shortcut Here".

Once done, here is how to add the command line:

1. Right click on the shortcut for TOPS Pro on your desktop.
2. Select the option for 'Properties'
3. Click on the center tab called 'Shortcut' Your should see a widow like the one right.
4. Next, go to the line marked Target and scroll to the end of the line.
5. Hit the Spacebar, then type in the `-ini=` command line parameter.

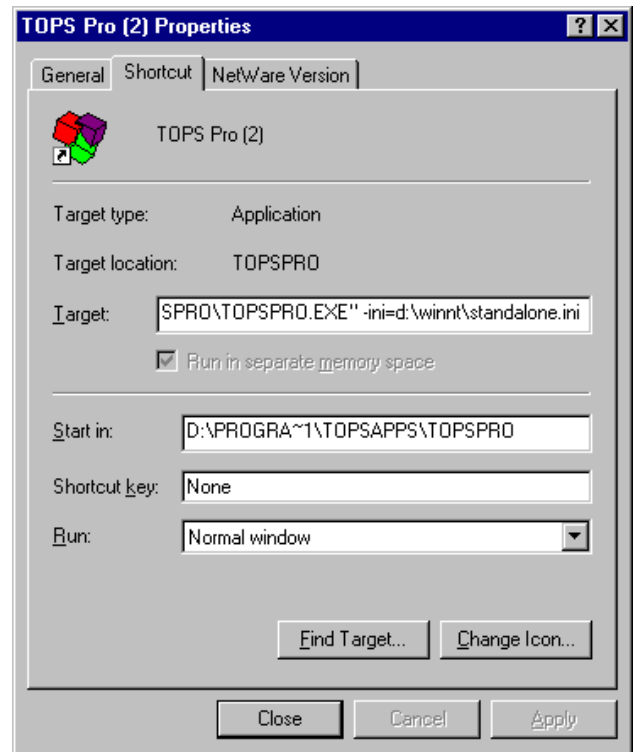
As long as you have the right path in the Target line and the new INI file exists, this shortcut will use the special INI file you have made.

Next, the information about the TOPSPRO.INI file.

```
[TOPSPRO]
DBPath=D:\PROGRA~1\TOPSAPPS\TOPSPRO\DATA
AppPath=D:\PROGRA~1\TOPSAPPS\TOPSPRO
LanguagePath=D:\PROGRA~1\TOPSAPPS\TOPSPRO\La
nguage
PictPath=D:\PROGRA~1\TOPSAPPS\TOPSPRO\Pict
TroubleWizard=WRITE D:\PROGRA~1\TOPSAPPS\TOPSPRO\PICT\TROUBLE.WRI
BMPPPath=D:\PROGRA~1\TOPSAPPS\TOPSPRO\BMP
LogoPath=D:\PROGRA~1\TOPSAPPS\TOPSPRO\BMP\tops.BMP
CustomShapePath=D:\PROGRA~1\TOPSAPPS\TOPSPRO\Style
*UseRSCWGT=False
```

Above are the frist few lines of the TOPSPRO.INI file. You will always have a copy of this file in the TOPS Pro directory and either your Windows or Winnt directory. TOPS, by default, uses the file in your Windows or Winnt directory.

When a user starts up the TOPS program, TOPS first runs this file to see where all of the TOPS information is stored. If something is wrong in this file, TOPS will either give an error message or not run at all. The main portion of this file that you may want to edit is the DBPath. This is the path where TOPS has stored all of it's data (Database Path). If you copy your Data folder from your TOPS Pro folder to another place, edit the DBPath to reflect where the change has been made. You can use a command line parameter `-dbpth=` like the `-ini=` command line as above. Either of these methods will work if you want more than one database or to change the location of your database.



TOPS Engineering Corporation **Total Optimization Packaging Software**

1651 N. Collins Blvd. ♦ Suite 240 ♦ Richardson, Texas 75080

(USA) 972-739-8677 ♦ (Fax) 972-739-9478 ♦ www.topseng.com ♦ info@topseng.com