


UPDATE PROCEDURES FOR TOPS® PRO

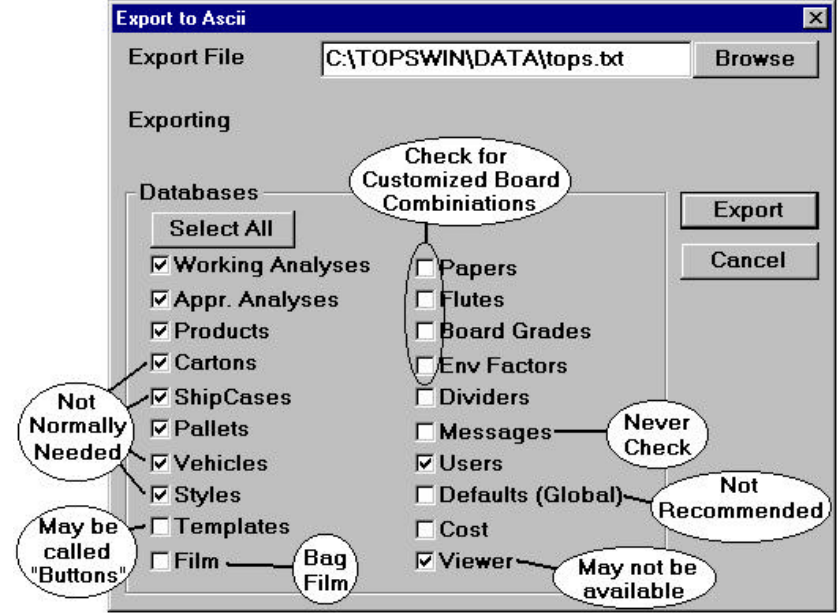
Read completely before Installation

Network installations (both single and multi-user) will need to read the enclosed "NETWORK INSTALLATIONS" information sheet in addition to this document.

1. If you have data a the previous copy of TOPS for Windows (TPW) that you want to carry over to the new copy of TPW, continue with step 2. If you have **no analyses**, new *box styles*, new *pallets*, changed *board grades*, or other adjustments to carry over from the old version skip to step 5.
2. Run the CONFIG program of the TPW currently installed on your machine. Login as anyone. Select  TOPS Config Supervisor/Login/Logout from the main menu. Enter the password "TOPS SOFTWARE" (note the space between "TOPS" and "SOFTWARE") and hit <enter>.
3. Select *File/Export* from the main menu. Leave the Export File field alone (it will be filled in automatically) and check the boxes indicated in the figure on the next page. You may choose not to check some of the boxes if you would like to take this opportunity to clean out some of the databases. You may check additional boxes if you have made changes to those items. Click on the *EXPORT* button. The program will begin cycling through the selected databases.

1651 N. Collins Blvd. Suite 240, Richardson, TX 75080
(USA) 972-739-8677 (FAX) 972-739-9478
info@topseng.com www.topseng.com

UPDATE PROCEDURES FOR TPW CONTINUED . . .



4. Leave the CONFIG program. (Select *File/Exit* from the main menu or hit <alt><F4>.)
5. Place diskette #1 in your machine. At the Program Manager desktop, select *File/Run* from the main menu. Type in "A:\SETUP" at the prompt and hit <enter> or click on OK. Respond to the installation program's prompts as needed. If prompted, "Record already exists. Replace or Skip?" click on the REPLACE button if you would prefer to keep your old data over TOPS shipped defaults. If you exported your data and are **not** prompted to import it contact TOPS technical support at (USA)972-739-8677.

This concludes the Update Procedures for TPW.

P.S. Run CONFIG after installation to adjust your *Definitions/Defaults* settings.