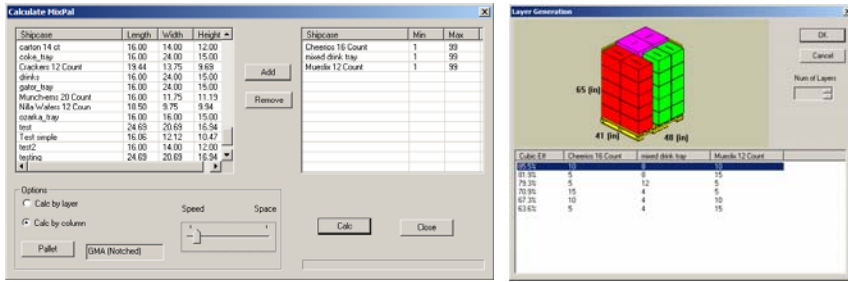


MixPro Auto Load Generator

An automatic calculation engine to place mixed size shipcases onto a pallet which is optimized for aisle display in club stores. Users can specify arrangement preference in layer, column or row. An optional labeling function is also available to indicate the front side of shipcases.

To access the function, click on the MixPro Calc Wizard tool button.

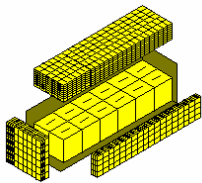


Features available in:

- TOPS
- PackStak
- LoadStak

Enhanced MixPro Functions

Other new functions within MixPro include support of slip sheets, corner posts, ability to set/show shipcase display face directions and other edit functionalities.



Advance Container Optimization

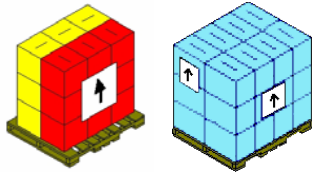
This new option allows users to load shipcases directly onto the void spaces to the side, top or end of the unitloads and bring cube utilization close to 100%.

At the Vehicle Parameters dialog box, check off the desired locations for "Loose Load items" at the lower left hand corner.

Enhanced Loading of Heavy Products

Improvements in loading heavy items into vehicles.

- TOPS
- PackStak
- LoadStak

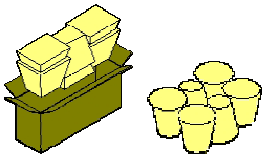


Unitload Labels and Display Face Direction

Users can add labels to selective sides of the pallet load as well as the position (center, upper left, lower right, etc) where the labels will be placed. To access, click the Options button at the UnitLoad Parameters dialog box and check the Label option.

To change the display face direction of shipcases on the unitload, click the Modify button, highlight the shipcase and click Rotate.

- TOPS
- PackStak
- LoadStak

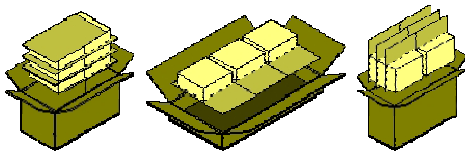


Inverted Nesting

The new inverted nesting arrangement will be useful to packages like flower pots, plumbing parts, water glasses and more.

To use, check off the "Inverted Nest" option in the Tub Parameters dialog box.

- TOPS
- PackStak
- LoadStak



Blister Packs

TOPS Pro 5.20 supports blister packs, in straight or nested arrangements.

At the green icon group in the Control Panel, select Blister Pack. The dialog box allows you to enter dimension for the package, position of the blister as percentage indent from the edges of the package and whether the packs can be nested.

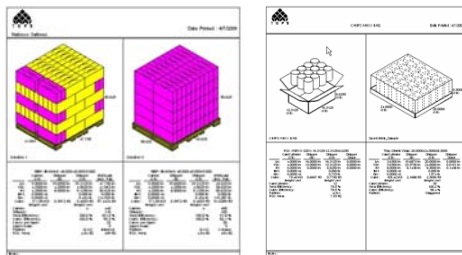
- TOPS
- PackStak
- LoadStak



New Shapes

The sample database will come with more shapes including stand-up pouches, custom trays and boxes with lid.


- TOPS
- PackStak
- LoadStak



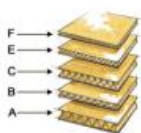
Analysis Comparison Report

At any state of an analysis (shipcase, pallet load or container), users can create reports with side-by-side comparison between any two solutions as well as between two analyses.

To compare solutions, select one solution to be displayed on the view pane, then right click on an alternate solution in the solution list and select "Preview Multiple Solution".

To compare analysis, click the Combined Report button , select an analysis with the Browse button, specify the Sequence to be compared and click OK.

- TOPS
- PackStak
- LoadStak



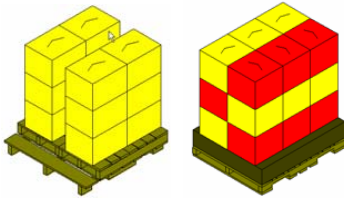
New Flute Definition

In addition to the existing nine flute types defined in TOPS Pro, users can define new flute parameters in the TOPS Config program.

To define new flute, run Config.exe in the TOPSAPPS folder; then go to Define | Flutes.

- TOPS
- PackStak
- LoadStak

TOPS Pro Version 5.60 Release Summary (Continued)



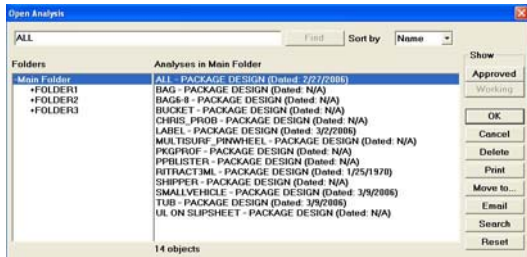
Slave Pallet and False Bottom

This feature allows users to place a unitload on top of another pallet or add a raised platform for the shpcases on the pallet.

To use slave pallet, click the Slave Pallets option in the UnitLoad Parameters dialog box. Specify a slave pallet where shpcases will be loaded. This new unitload will be placed on the pallet specified under the Single Pallet Style option.

To use the False Bottom option, click Options in the UnitLoad Parameters dialog box, check the "False Bottom" option and enter the height of the platform to be added.

- TOPS
- PackStak
- LoadStak

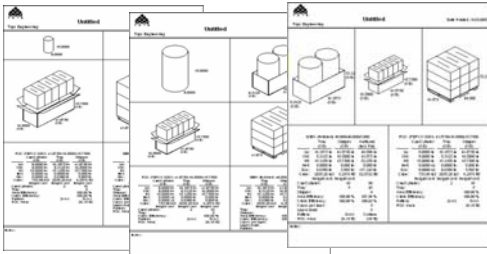


New File Interface with Quick Find and Sort Capabilities

The File operation dialog box takes on a more traditional Windows look with Find and Sort capabilities. Use the Find function to quickly filter analyses containing the matched string.

Extra functions are added to allow users to print, email and export directly from this dialog box.

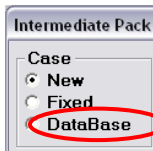
- TOPS
- PackStak
- LoadStak



Enhanced Reports

The Package Analysis Report can compose of up to 6 panels for more package illustrations and statistics. Users can also change the fonts used in these reports to accommodate more texts.

- TOPS
- PackStak
- LoadStak

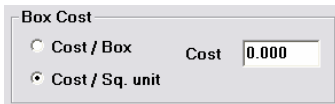


More Database Functions for Primary and Intermediate Packs

The database function is added to support Intermediate packs. Users can now instruct TOPS to go through the shpcase database for intermediate packs.

For primary packs, users can define new items for all shapes and be saved to the database. This new function is available in PackStak.

- TOPS
- PackStak
- LoadStak

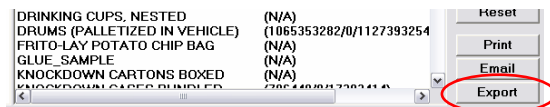


Shpcase Costing

This new feature allows users to enter cost per shipper box or cost per square area unit to give a quick glimpse of the total corrugated costs.

To access, click the Options button in the Shpcase Parameters dialog box. The Box Cost parameters are available at the lower right hand corner.

- TOPS
- PackStak
- LoadStak



Auto Export Functionality

This function will automatically export analysis data from TOPS to be used with other systems like SAP or other ERP systems.

To use, go to File | Open Analysis, highlight an analysis name and click the Export button.

To export all saved analyses from TOPS, go to Export | Analysis Summary.

- TOPS
- PackStak
- LoadStak



Direct PDF Output

TOPS Pro will export directly to PDF even without installing Adobe Acrobat Writer or third party PDF writer.

To use this function, go to Export and select PDF.

- TOPS
- PackStak
- LoadStak

Enhanced Information

Users can create details for each analysis with custom defined fields and enter tare weight for shpcases and pallets. To use this function, go to File | Analysis Specifications.

- TOPS
- PackStak
- LoadStak

Drag and Drop Analysis Import

This offers a quick and easy way to import an analysis. Instead of first importing the analysis and then opening it in TOPS, users can simply drag and drop the analysis from its folder directly into TOPS.

- TOPS
- PackStak
- LoadStak