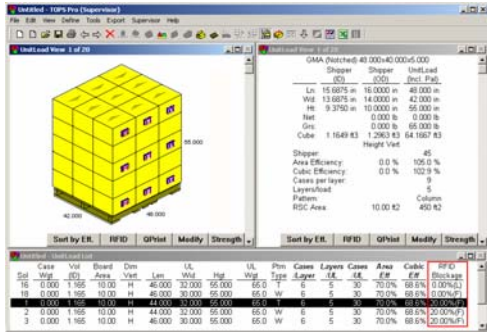


TOPS Pro Version 5.70 Release Summary

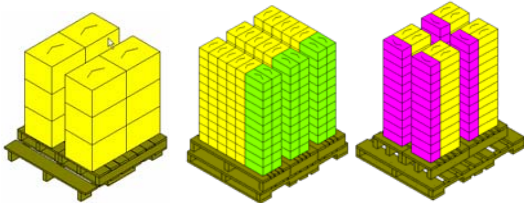


RFID Calculations

The RFID function helps determine the best pallet pattern for maximum RFID readability.

The calculations are based on the maximum RFID blockage that a box can have in a pattern. This is calculated based on the direction of the box faces with respect to the edge of the pattern and the user inputs for the RF blockage by the Box walls and the product.

- TOPS
- PackStak
- LoadStak



Multiple Slave Pallets

Users can specify use of two to four slave pallets on top of a regular pallet. Be sure to define the smaller pallets ahead of time so they can be available in the database.

To define new pallets, click on the "New Pallet" button in the Unitload Parameters dialog box.

- TOPS
- PackStak
- LoadStak

```
[DetailStats]
ULHgtNoPal=true
ULGrsWgtNoPal=true
```

Additional Statistics

The unitload statistics can display (1) Height without pallet and (2) Weight without pallet. To enable this display, add the switches in the TOPSPRO.INI file.

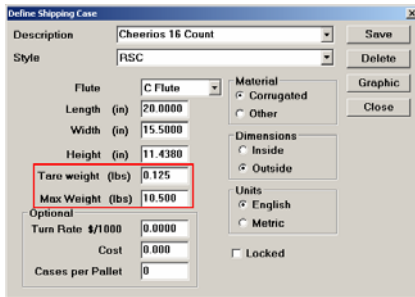
- TOPS
- PackStak
- LoadStak

```
CalcSettings.ini
[SolutionLimit]
SCCount=25
ULCount=50
TVCount=75
```

Limit the Number of Solutions

The maximum number of solutions shown for each analysis can be set using a text file "CalcSettings.ini" in the \TOPSPRO\ folder with parameters as illustrated to the left.

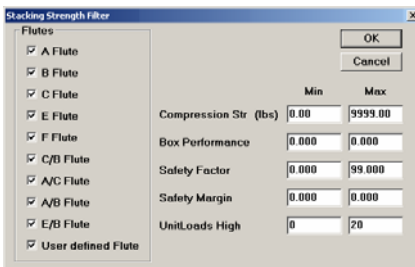
- TOPS
- PackStak
- LoadStak



Tare Weight and Maximum Weight for Shipcases

In the Define Shipcase dialog box, users can add the tare and maximum weight of the shipcase and use them in calculations.

- TOPS
- PackStak
- LoadStak



New Filters for Stacking Strength

You can now use Safety Margin and Box Performance to filter stacking strength results.

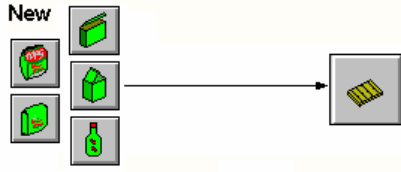
- TOPS
- PackStak
- LoadStak

Sort function for Solution List

The different solutions in the Solution List can be sorted on selected parameters liked Cubic Efficiency, Cases/Layer or Layers/UL. You will fine these sortable fields marked in **Italic** in the column heading.

- TOPS
- PackStak
- LoadStak

TOPS Pro Version 5.70 Release Summary (Continued)

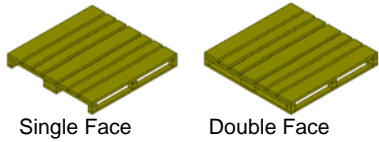


New Primary Pack on to Pallet Design Sequence

You can create a design sequence of “New” primary pack (for carton, bottle, milk carton and bag) onto a pallet. This helps in determining the best package size to give a perfect fit on the pallet.

At the Carton/Can/Milk Carton/Bag Parameters dialog box, select “New” and enter the minimum and maximum dimensions desired and the pallet to be used. TOPS Pro will provide solutions using the allowable dimensions.

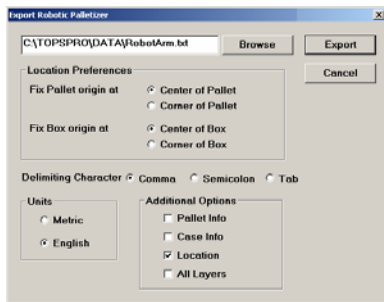
- TOPS
- PackStak
- LoadStak



Double Face Euro Pallet

Users can create details for each analysis with custom defined fields and enter tare weight for shipcases and pallets. To use this function, go to File | Analysis Specifications.

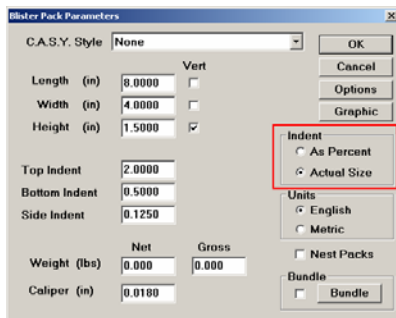
- TOPS
- PackStak
- LoadStak



Export Robotic Palletizer

This export feature has been enhanced to make it more flexible and include more options while exporting.

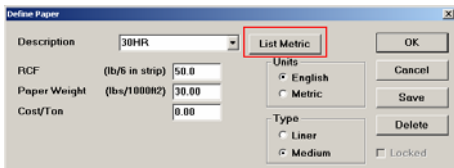
- TOPS
- PackStak
- LoadStak



Blister Pack Options

The indent values in Blister packs can now be specified as percentage of the sides or as actual size values

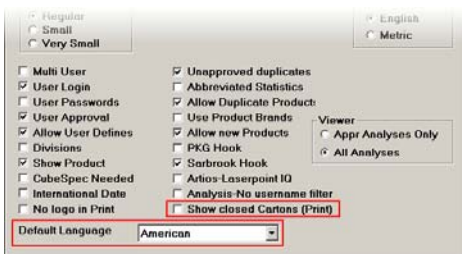
- TOPS
- PackStak
- LoadStak



Easier to View and Edit Papers

It is now easy to switch between Papers saved in English and Metric from the Config program.

- TOPS
- PackStak
- LoadStak



New Global Settings

Show Closed Cartons option lets you to have the option of how the boxes (Primary Packs or Shippers) are to be shown in Print.

Default Language is used as the language in Viewer where there is no user logging in to the system.

- TOPS
- PackStak
- LoadStak