

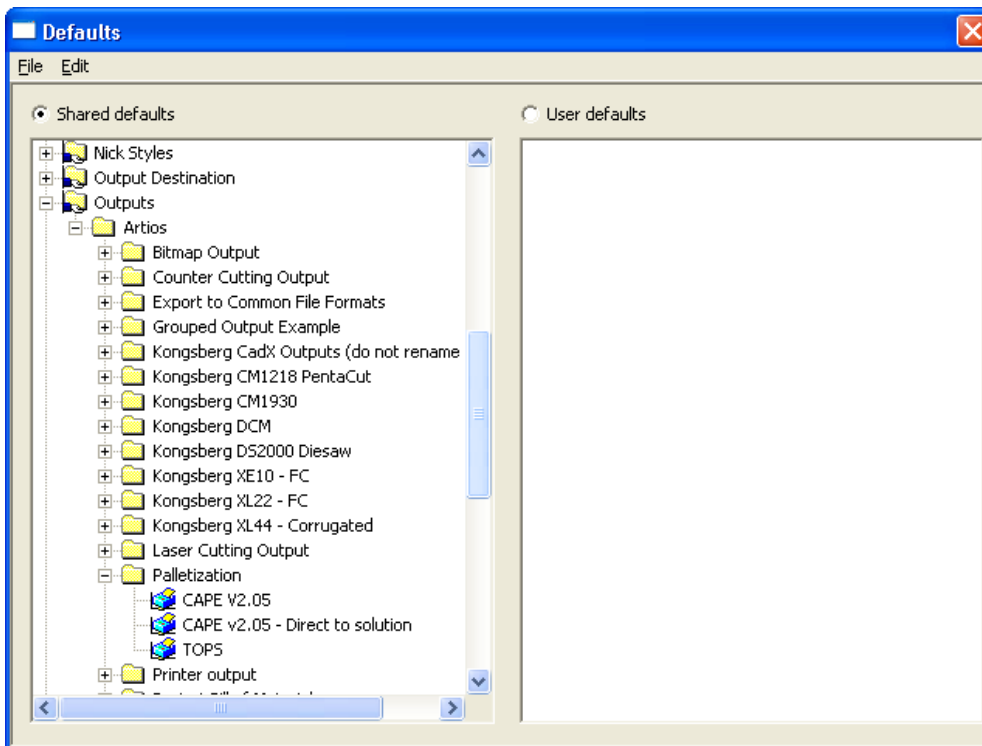
TOPS Pro and Artios CAD Integration

Setting Defaults in Artios

To initiate the integration of TOPS Pro from Artios, the defaults should be set in Artios so that it points to the correct install of TOPS Pro. Below are the steps involved.

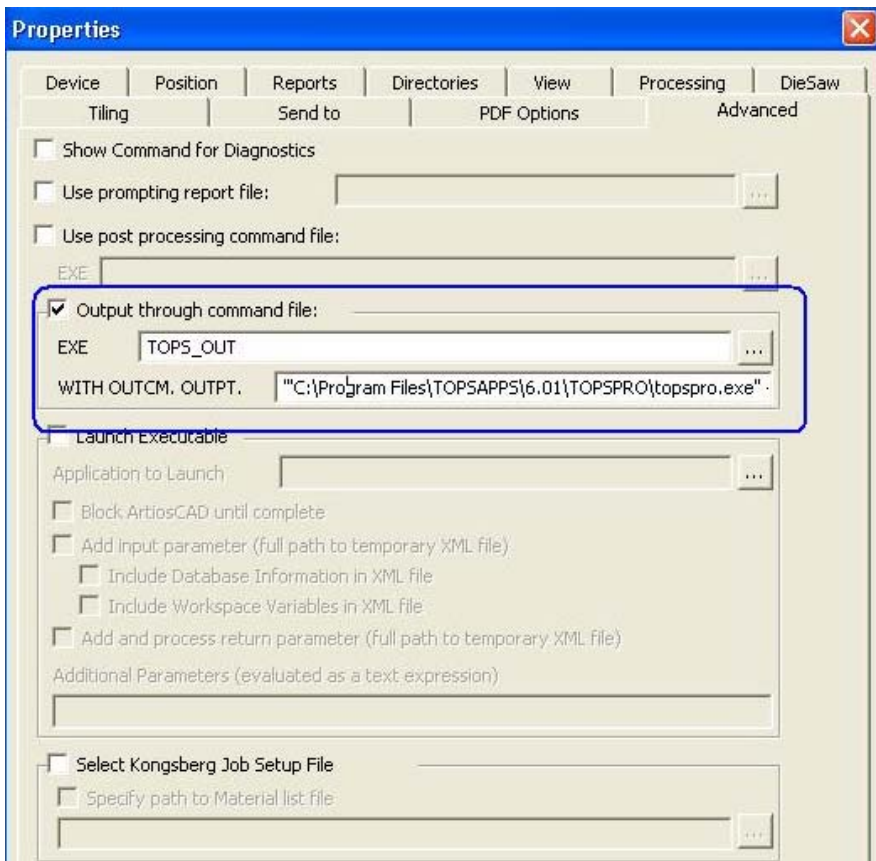
Note: The menus and screenshots might be slightly different from what is shown here with different versions of Artios

1. Choose **Options** menu in Artios and select **Defaults** under it. This should open up the default selection dialog.
2. Under Shared defaults, go to the section **Outputs->Artios->Palletization->TOPS** as shown below.

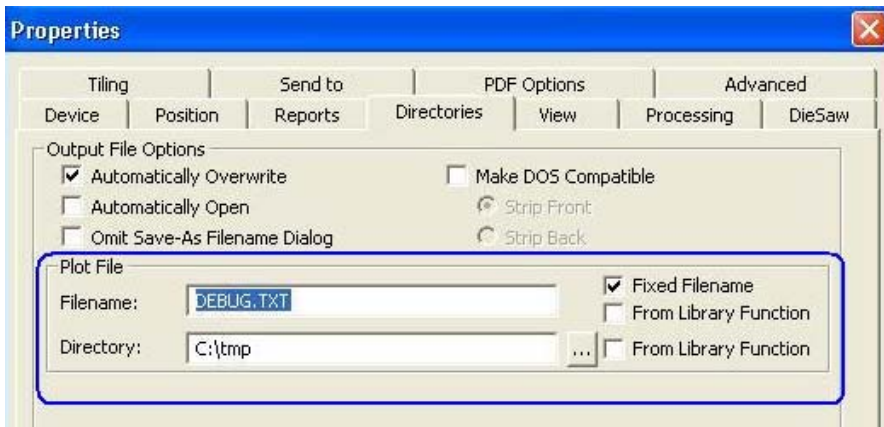


3. Double click on the **TOPS** icon to set the details.
4. Click on the **Advanced** tab. The **WITH OUTCM.OUTPUT** should have the current install of TOPS Pro with full path and INI information within single quotes.

*Example: "C:\Program Files\TOPSAPPS\6.01\TOPSPRO\topspro.exe" -
ini=C:\PROGRA~1\TOPSAPPS\6.01\TOPSPRO\topspro.ini'*



5. Select the **Directories** tab and make sure that the Plot File section has the option **Fixed Filename** checked. The filename and directory can have the default values.



6. Click OK and save the defaults.

Launching TOPS Pro

1. From Artios CAD, select the Export to TOPS menu option. This will launch TOPS Pro and pass in the Dimensions and style of the Carton / Box.
2. TOPS Pro will display a login Dialog Box, login under any user name.
3. Next, a Dialog will prompt for an Analysis name to use for the imported carton in an analysis, you may use any name here and hit Ok button.
4. Next Dialog will show the data coming from Artios. Here, you can select whether to bring the data, as Shipcase or Primary Pack. If you want to add this case to the database check the “Add to Database” check Box. Hit the OK button to do analysis based on this data.
5. TOPS Pro will then perform an analysis using the Artios data.
6. The analysis is setup using a predefined template / default values. Contact TOPS Engineering if you would like to know how to change this template / default values.
7. Once the analysis is calculated you may then perform a KD (knock down) analysis for this box by clicking on the “KD” button on the tool bar.
8. Then TOPS will perform and KD analysis.
9. Use the “Combine Report” to get single page printout with both the KD and Box/erected analysis on it