



## What is TOPS<sup>®</sup>Pro?

TOPS<sup>®</sup>Pro is a software application that allows users to determine the most optimal package design and pallet configuration based on product dimensions and packaging requirements. It can also be used to calculate package size, package configuration, stacking strength, truck configuration as well as to create mix-item trays and mixed-load pallets for club store display.

TOPS<sup>®</sup>Pro uses a powerful 3D real-time graphics engine to display what is being designed. Users can easily drag and drop packages to create custom designs, add custom graphics, email reports and publish design solutions on the Internet. TOPS<sup>®</sup>Pro is also available on the Internet in a smaller scale as TOPSePAC<sup>®</sup> which allows package design to be done anytime, anywhere, on any platform with using an Internet browser.

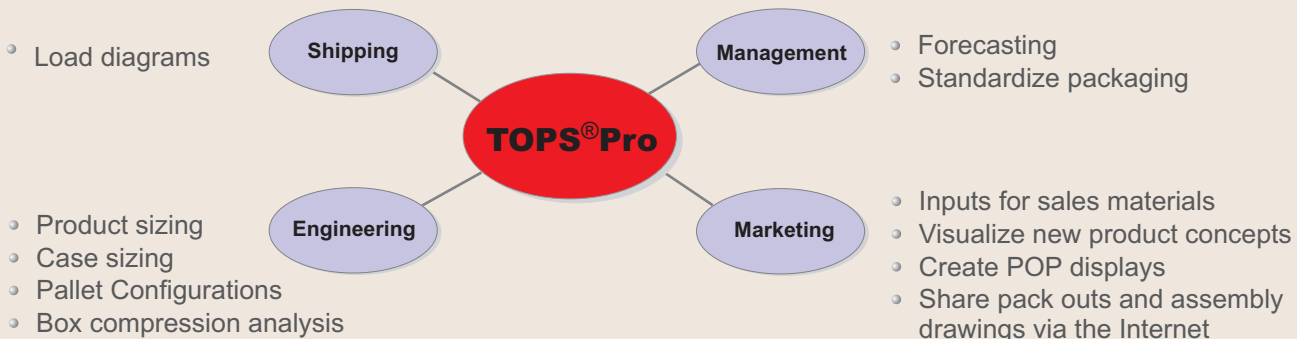


## What are the Benefits of TOPS<sup>®</sup>Pro?

The benefits are simple - Savings. TOPS<sup>®</sup>Pro allows users to reduce packaging and transportation costs by 5-20%, achieved by:

- Improving productivity by decreasing the time required for case sizing,
- Optimizing shipcase sizes so there will be less corrugated use,
- Optimizing pallet patterns which allows more products to be shipped per transit vehicle, and
- Calculating compression/stacking strength to determine the best board grade, cut corrugated cost, yet minimize damage during transit.

## Who can benefit from TOPS<sup>®</sup>Pro?



## TOPS<sup>®</sup> Pro Saves by Optimizing Shipcase Sizes

By picking the right shipcase for the primary pack, board area is cut down by 17.15% while retaining the same cubic efficiency.

At an annual usage of one million cases, savings in corrugated use amounts to **\$41,3000** per year.

RSC (FEFCO 0201) 16.3125x12.3125x7.6250				RSC (FEFCO 0201) 12.3125x 8.3125x 14.6250			
Can/Cylinder (OD)	Shipper (ID)	Shipper (OD)		Can/Cylinder (OD)	Shipper (ID)	Shipper (OD)	
Ln: 4.0000 in	16.0000 in	16.3125 in		Ln: 4.0000 in	12.0000 in	12.3125 in	
Wd: 4.0000 in	12.0000 in	12.3125 in		Wd: 4.0000 in	8.0000 in	8.3125 in	
Ht: 7.0000 in	7.0000 in	7.6250 in		Ht: 7.0000 in	14.0000 in	14.6250 in	
Net: 0.0000 oz		0.000 lb		Net: 0.0000 oz		0.000 lb	
Grs: 0.0000 oz		0.793 lb		Grs: 0.0000 oz		0.657 lb	
Cube: 87.96 in <sup>3</sup>	0.7778 ft <sup>3</sup>	0.8863 ft <sup>3</sup>		Cube: 87.96 in <sup>3</sup>	0.7778 ft <sup>3</sup>	0.8662 ft <sup>3</sup>	
Height Vert				Height Vert			
Can/Cylinder: 12				Can/Cylinder: 12			
Area Efficiency: 78.54 %				Area Efficiency: 78.54 %			
Cubic Efficiency: 78.54 %				Cubic Efficiency: 78.54 %			
Pattern: 4x3x1				Pattern: 3x2x2			
RSC Area: 7.93 ft <sup>2</sup>				RSC Area: 6.57 ft <sup>2</sup>			

## TOPS<sup>®</sup> Pro Saves by Optimizing Pallet Pattern

Improvements made by using a different pallet pattern include:

- One more shipper per layer
- Five more shippers per pallet
- Are efficiency up by 10.45%
- Cubic efficiency up by 10.34%

At standard transit costing, savings per million cases would be at least **\$25,000**.

GMA (Notched) 48.000x40.000x5.000				UnitLoad (incl. Pal)			
Shipper (ID)	Shipper (OD)	UnitLoad (incl. Pal)	UnitLoad (incl. Pal)				
Ln: 17.9375 in	18.2500 in	44.000 in	47.500 in				
Wd: 10.6875 in	11.0000 in	36.500 in	40.250 in				
Ht: 9.0630 in	9.6880 in	53.440 in	53.440 in				
Grs: 12.500 lb	12.500 lb	565.000 lb	627.500 lb				
Cube: 1.0055 ft <sup>3</sup>	1.1255 ft <sup>3</sup>	49.6670 ft <sup>3</sup>	59.1265 ft <sup>3</sup>				
Height Vert				Height Vert			
Shipper:		40	45				
Area Efficiency:	0.00 %	83.65 %	94.10 %				
Cubic Efficiency:	0.00 %	82.69 %	93.03 %				
Cases per layer:		8	9				
Layers/load:		5	5				
Pattern:		Column	Diagonal				
RSC Area:	8.40 ft <sup>2</sup>	336 ft <sup>2</sup>	378 ft <sup>2</sup>				

## TOPS<sup>®</sup> Pro Saves with Container Optimization

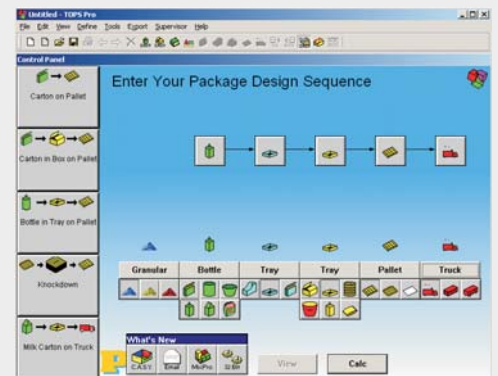
TOPS<sup>®</sup> Pro provides about 50 different plans for straight loads. An optimal plan can load more shippers with the same resources.

At approximately \$2000 per container, the savings per million cases is over **\$15,000** per year.

476.00x98.00x110.00				476.00x98.00x110.00			
Shipper (ID)	Shipper (OD)	Vehicle Load	Vehicle Load				
Ln: 24.6875 in	25.0000 in	475.000 in	475.000 in				
Wd: 12.9375 in	13.2500 in	92.75 in	92.75 in				
Ht: 11.3750 in	12.0000 in	108.00 in	108.00 in				
Grs: 0.000 lb	0.000 lb	0 lb	0 lb				
Cube: 2.1025 ft <sup>3</sup>	2.3003 ft <sup>3</sup>	2753.52 ft <sup>3</sup>	2753.52 ft <sup>3</sup>				
Height Vert				Height Vert			
Shipper:		1179	1188				
Area Efficiency:	0.00 %	93.02 %	93.73 %				
Cubic Efficiency:	0.00 %	91.33 %	92.03 %				
Cases per layer:		131	132				
Layers/load:		9	9				
Pattern:		Triblock	Triblock				
RSC Area:	13.41 ft <sup>2</sup>	15815 ft <sup>2</sup>	15936 ft <sup>2</sup>				
Density (gr/cc):	0.0000	0.0000	0.0000				

## User Friendly Features

- **One-click Templates:** Save frequently used design sequences into templates and assign buttons to them for one-click startup.
- **Great Ease of Use:** Pop-up tool tips and floating menus provide help and quick access to commonly-used functions.
- **Rich Graphics:** A real-time 3D graphics engine provides quick and realistic renderings for primary packages, shippers, pallets and cargo load plans. Other display options like showing shipcases as invisible to reveal their contents on pallet, popping open corner box on pallet to show its contents, provide even greater flexibility in reports and outputs.
- **Easy Graphic Manipulation:** Users can easily rotate graphics with the arrow keys to have different views of their design and packaging solutions. Paste on graphics allow a more realistic view of the solutions.
- **Email and Export options:** Users can easily share solutions with colleagues and customers via email, export reports directly to MS Word in pre-defined templates and integrate solutions and data with other systems in XML format.
- **Multiple Language Support:** TOPS<sup>®</sup> Pro supports over 10 different languages including Simplified and Traditional Chinese, Japanese and Roman character based languages. Users can change language easily on the fly, for example, designing in German and then print the reports in French or Chinese.

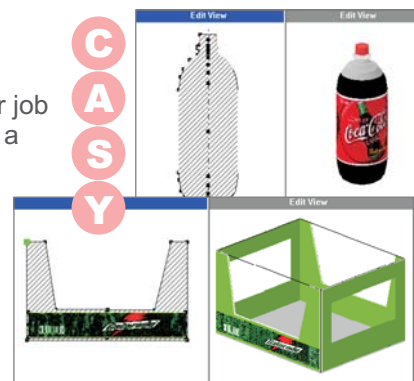




## Primary Package and Shipper Design

From designing water bottles, cans, milk cartons, bags, to creating your own shape, TOPS®Pro provides an easy to use, yet powerful software to make your job a breeze. Specify dimensions and other parameters or apply special graphics, a 3D rendering of your design will come right on the screen within seconds.

“Create A Shape Yourself” is a functional module in TOPS®Pro which allows users to create custom shapes for primary packs and specialty trays. Users can model symmetrical and asymmetrical solid shapes such as trigger-top bottles, lamps, pinch tubes and more. The Case Pack module of CASY allows creation of handholds or custom tray shapes. Just define and drag the anchor points to define new shapes.



## Create Mixed Trays and Mixed Load Pallets



The MixPro module in TOPS®Pro allows users to create mixed trays or mixed product loads for displays. Its 'virtual' staging area gives users the ability to easily 'drag and drop' products into a tray or shipcases onto a pallet. Users can also specify the vertical dimension for the shipcase. The versatility of MixPro provides an easy and effective way to create great display items.

## Create Optimal Pallet Patterns

TOPS®Pro automatically generates different pallet patterns for your straight loads. Users can pick the one that best meets their need, be it for cubic efficiency, for store displays, for load stability or for inventory keeping. Users can simply point and click on the pallet pattern editor and TOPS®Pro will automatically change the pattern.

## Compression and Stacking Strength Analysis

TOPS®Pro offers a host of mechanical and environment analyses to ensure your savings in corrugated costs and minimize transient damages. It uses the McKee formula along with other factors to calculate Stacking Strength results based on Edge Crush, Ring Crush, or Kellicut answers. Users have full flexibility to enter their own paper and board values as well as to filter out values for quick reference. Stacking strength is also available for non RSC boxes as a relative percentage of RSC strength.

## Share Specifications over the Company Network or World Wide Web

TOPS®Pro's Web Publisher allows users to convert packaging specifications into web pages and be posted on the Internet or company's Intranet and shared with colleagues and customers.

## A Wealth of Packaging Options

TOPS®Pro supports common packaging options including dividers, pads, slip sheets, straps, strap guards, corner posts, caps and shrink wraps. These options can be easily added on the fly to trays, shippers or pallets to give a realistic picture of your cargo loads.

## Loading Transit Vehicles

TOPS®Pro can load a single item or pallet of items into your shipping vehicles. Users can quickly see the best way to maximize available floor space, minimize damage through stacking strength analysis and realize great cost savings. Choose from the extensive data base of trucks, airfreights, railcars and sea containers or define your own transit vehicle.



Maximum Value Plan **MVP**

TOPS<sup>®</sup> is proud to offer an outstanding software support service called MVP. The plan provides extensive benefits that include toll-free technical support, priority upgrades, open-door training and more. As a MVP customer you will enjoy:

- **Convenient Upgrade Coverage:** Receive free software upgrades via US Mail for the one year coverage period.
- **Toll-Free Access To Technical Support:** Toll-free access for our prompt technical support staff during normal office hours from 8:30 am to 5:30 pm Central Standard Time (Monday through Friday).
- **Special Open-Door Training:** One full day of free training set at customer's convenience to get all users up and running as fast as possible.
- **Free Animated Tutorials:** Access to TOPS<sup>®</sup> animated software tutorial series which illustrate the features and functions of TOPS<sup>®</sup>Pro and MaxLoad<sup>®</sup>Pro. Members can even request TOPS<sup>®</sup> to create special tutorials to will meet their need.
- **Software Discounts:** Receive special discounts on all present and future TOPS<sup>®</sup> software products.
- **Damaged Disk Protection:** TOPS<sup>®</sup> will replace any damaged disk free of charge during the MVP membership period.
- **Newsletter Subscription/Information Updates:** You'll receive newsletters that explain the latest improvements TOPS<sup>®</sup> software and tips on how to get the most out of your software investment.
- **MVP Update Meetings:** TOPS<sup>®</sup> will host update meetings for MVP customers at major industry trade shows to keep them informed of new product releases and to receive their valuable input on enhancements and features they would like to see on future software releases.
- **No Shipping Charges:** There will be no shipping charge on any upgrade or damaged disk. That means you will have the latest TOPS<sup>®</sup> products for just the low MVP membership fee.



Technical Specifications

<b>Availability</b>	TOPS <sup>®</sup> Pro 5.0.
<b>Platform</b>	Windows 95, 98, ME, NT, 2000, XP
<b>Network</b>	Any (Needs only a file server)
<b>Processor Recommended</b>	200 Mhz
<b>Hard Drive Space</b>	40 MB
<b>RAM Required/Recommended</b>	32 MB/64MB
<b>Code</b>	32 Bit
<b>Compiler</b>	Microsoft Visual C++ 6.0
<b>Framework</b>	32 Bit XVT 5.0 and Microsoft Foundation Classes
<b>Database Format</b>	32 Bit C-TreeUses ASCII Comma Delimited Text Files. Compatible With
<b>Import/Export</b>	Most Document Management systems, spreadsheets, databases and mainframes. Include Excel, Access, Paradox, AS400 and Unix Boxes

**Earning Our Name ... Everyday !**