

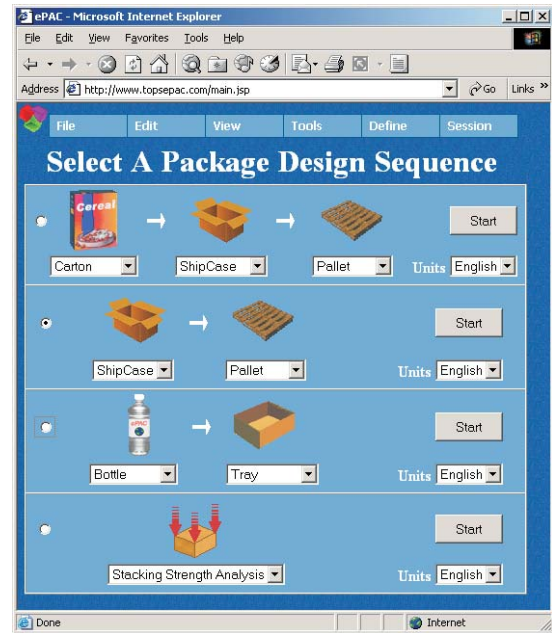
Now you can bring package design to wherever your next assignment leads you. Announcing TOPSePAC[®], the web-based version of TOPS[®]Pro package design and palletization software. With TOPSePAC[®], you can perform package design anytime, anywhere, on any platform using any internet browser.

In addition to the portability of package design and assuring products are optimized for shipping, here is a list of benefits of using TOPSePAC[®]:

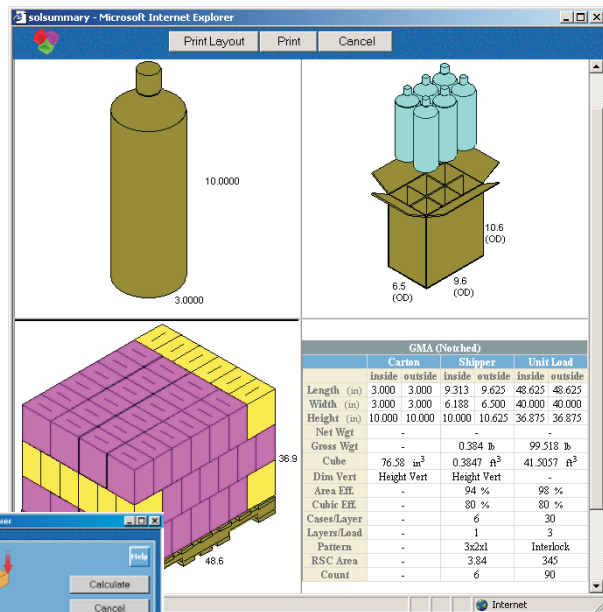
- ❖ Lower Total Cost of Ownership – No software to install or maintain. Cuts IT support cost to zero. Always stay up to date with the latest version of TOPSePAC[®].
- ❖ Better Data Management – Central location for storing all data. No distance or WAN limitations.
- ❖ Easier to Manage – Maintain and manage software configurations, default data at a single point.
- ❖ Value Added Customer Service – Sales reps can perform package design and palletization in seconds. All this in front of the customer!
- ❖ Easy Sharing of Data – Give customers and other departments view only access to the data.
- ❖ Integration – Analysis and solution data in XML format can be easily integrated with your in-house web based systems.
- ❖ Compatibility – Compatible with all operating systems with an internet browser.

TOPSePAC[®] is available as an add-on to TOPS[®]Pro network users.

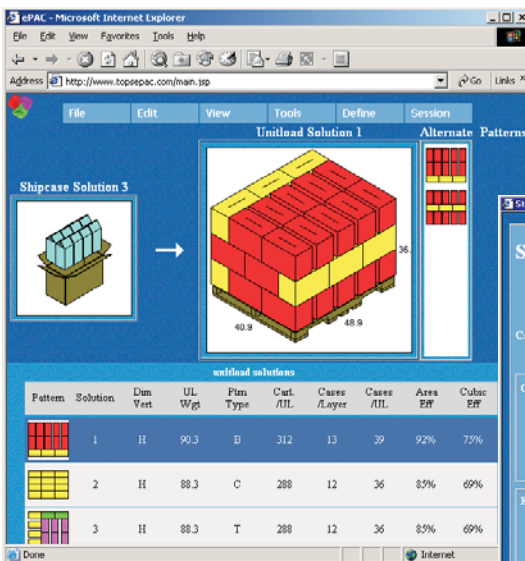
Call TOPS today to get your Username and Password for a free 30-day trial.



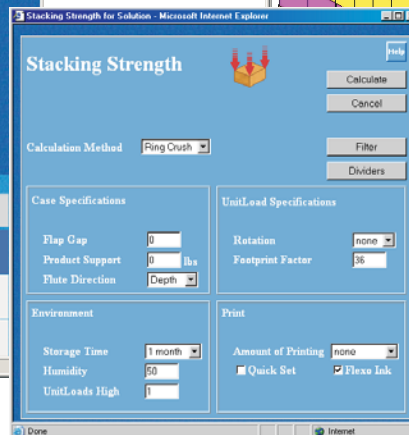
Simple and easy-to-use interface



Custom report showing primary pack, shipcase, unitload and statistics.



Unitload Solutions with alternate pallet patterns



Analyze stacking strength to make sure you are using the most cost-effective box