


# Chapter 6: MixPro Pallet

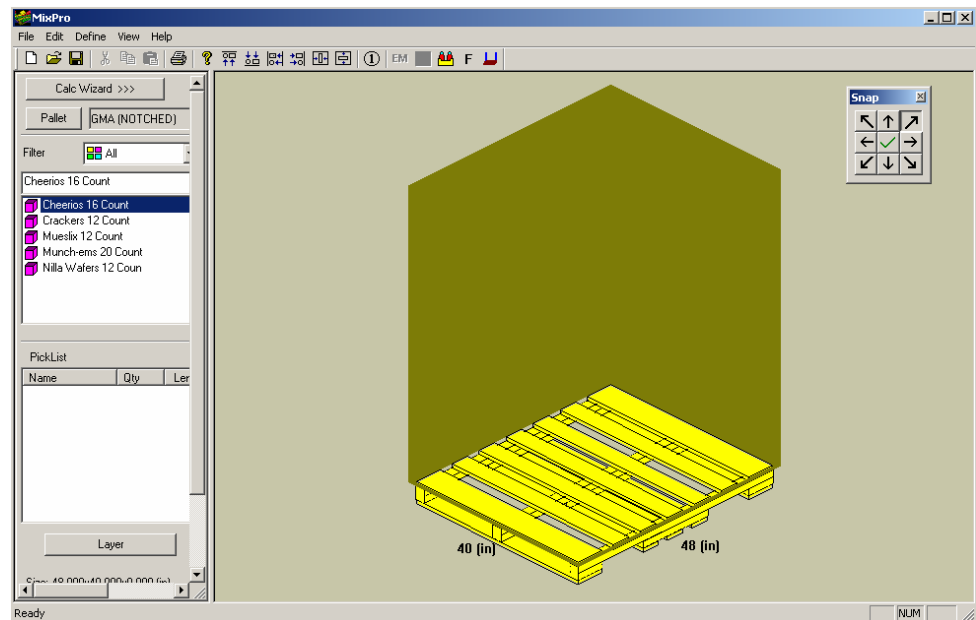
## Introduction

This chapter discusses MixPro Pallet, a TOPS Pro module that allows you to design a mixed-product pallet for display with different size boxes. For example, suppose you're loading a pallet for shipment to a warehouse store, where the pallet will be displayed on a busy aisle.

This mixed pallet load includes several shipcases of snack foods – chocolate bars, peanut bars and corn chips, all of which have different shipcase dimensions. The MixPro Pallet system allows you to easily load and place all types of shipcases onto a pallet.

## MixPro Pallet Editor

To access the MixPro Pallet module, go to the Toolbar and click on the MixPro Mixed Pallet Editor icon . The MixPro Pallet Editor appears, as pictured below.



Notice the following features on the MixPro Pallet Editor:

- ❖ **Calc Wizard:** Clicks the button to open MixPro auto load generator, an automatic calculation engine to place mixed size shipcases onto a pallet.
- ❖ **Pallet Button:** Allows you to select a pallet from the database for loading shipcases.
- ❖ **Filter Button:** Allows you to filter the types of shipcase to be displayed in the Shipcase List. Select “All” to display all available cases and trays supported by MixPro.
- ❖ **Shipcase List:** Displays a list of shipcases that you can add to the pick list for loading onto the pallet.
- ❖ **Pick List:** Displays a list of shipcases you’ve selected from the shipcase list. These shipcases can be loaded onto the pallet. The pick list also tracks the following information for each type of shipcase: number of cases, length, width and height.
- ❖ **Layer Button:** Allows you to add layers of shipcases onto the mixed pallet, provided space is available to add the layers.
- ❖ **Pallet Display Window:** Displays an image of the pallet and allows you to drag shipcases onto the pallet.
- ❖ **Snap Toolbar:** Allows you to move the unitload flush to any corner or side of the pallet.

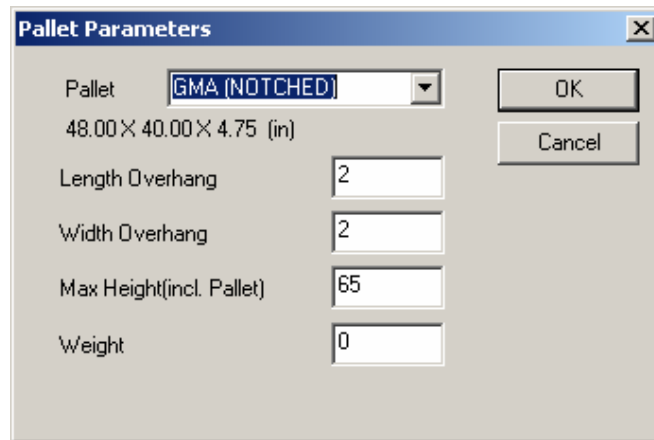
# Create a Mixed Pallet Manually

In this exercise, we'll manually create a mixed pallet load that consists of the following:

- ❖ 15 cases of chocolate bars
- ❖ 32 cases of peanut bars
- ❖ 30 cases of corn chips

To load this mixed pallet, follow these instructions:

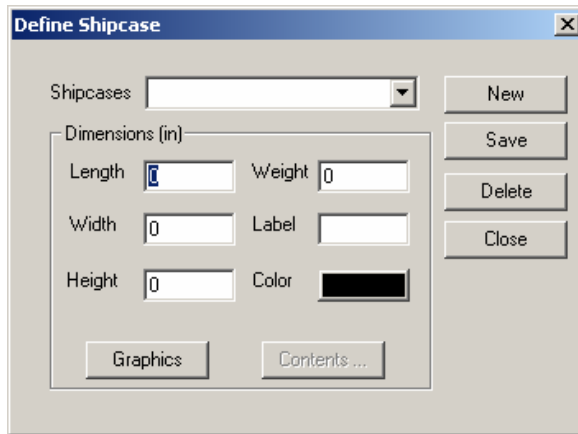
1. Click on the Pallet button. The Pallet Parameters dialog box appears, as pictured below.



2. Use the following fields to define the pallet parameters:
  - ❖ **Pallet:** Use the default (GMA [Notched]).
  - ❖ **Length Overhang:** Use the default (0).
  - ❖ **Width Overhang:** Use the default (0).
  - ❖ **Maximum Height (Including Pallet):** Enter 56.
  - ❖ **Maximum Weight:** Use the default (0).
3. Look at the shipcase list and decide which items you want to load onto the pallet. In this exercise, we want the mixed pallet load to include chocolate bars, peanut bars and corn chips.

Notice that the initial shipcase list does not include any of these items. In this case, MixPro allows you to create new shipcases for these items. To create a new shipcase, click Define on the Menu bar and select Shipping Case.

The Define Shipcase dialog box appears, as pictured on the next page.



4. Click on the New button and use the following fields to define the three shipcases:

### **Chocolate Bars Shipcase**

- ❖ **Shipcases:** Enter Chocolate Bars.
- ❖ **Length:** Enter 16.
- ❖ **Width:** Enter 12.
- ❖ **Height:** Enter 10.

### **Peanut Bars Shipcase**

- ❖ **Shipcases:** Enter Peanut Bars.
- ❖ **Length:** Enter 12.
- ❖ **Width:** Enter 6.
- ❖ **Height:** Enter 12.

### **Corn Chips Shipcase**

- ❖ **Shipcases:** Enter Corn Chips.
- ❖ **Length:** Enter 10.
- ❖ **Width:** Enter 9.
- ❖ **Height:** Enter 10.

**Note:** If you want, you can also define a label for the shipcase and assign the case a specific color. After completing the shipcase dimensions, click on OK.

You can also paste a graphic image onto a shipcase. To use paste-on graphics, click on the Graphic button. Further, you can add CASY trays to the shipcase. To add trays, click on the Contents button.

**Note:** The Contents button is only available for newly defined shipcase and will be available upon clicking on the New button in the Define Shipcase dialog box.

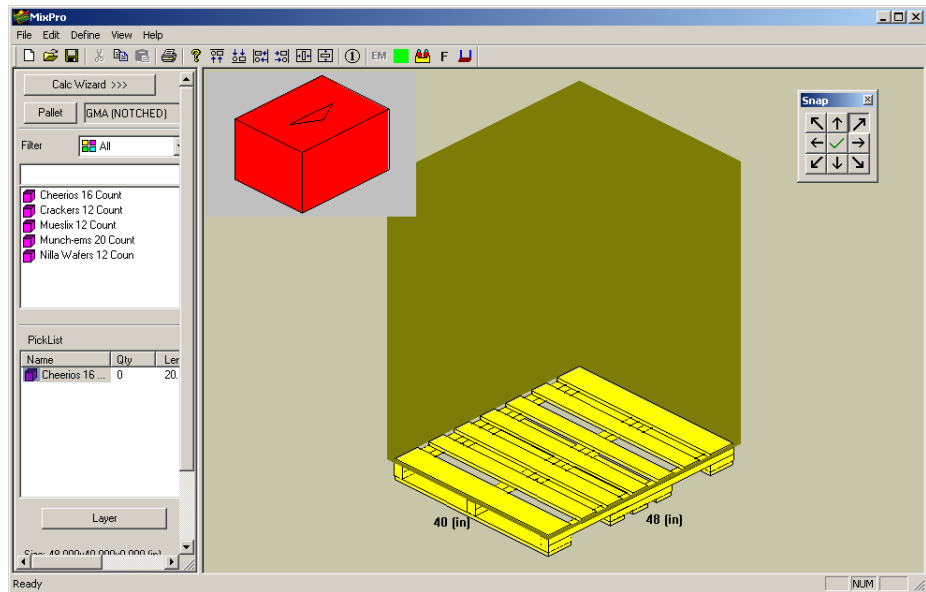
The MixPro Pallet Editor redisplay with the name of the new shipcase included in the shipcase list. When you've created these three new shipcases, the shipcase list will include chocolate bars, peanut bars and corn chips.

- In order to load an item onto the pallet, you have to move it from the shipcase list to the pick list. To move an item to the pick list, double click the shipcase from the shipcase list. The system inserts the selected item into the pick list.

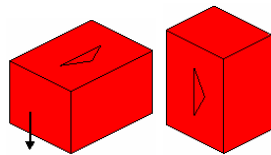
Repeat this step for each item you want to select to the pick list. In this exercise, we're loading three items – chocolate bars, peanut bars and corn chips.

- From the pick list, select an item to be loaded onto the pallet. In this exercise, we'll select the chocolate bars first.

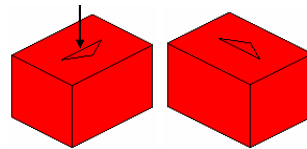
A graphic of the selected shipcase appears in the g.o.d. (graphic online display) window, located in upper left corner of the data display window, as pictured below.



**Note:** To change the orientation of the case – for example, position it on its side or on its end – click on the face of the shipcase you want to face the floor. Click on the top of the case to rotate 90 degrees.



Click on the face with the arrow

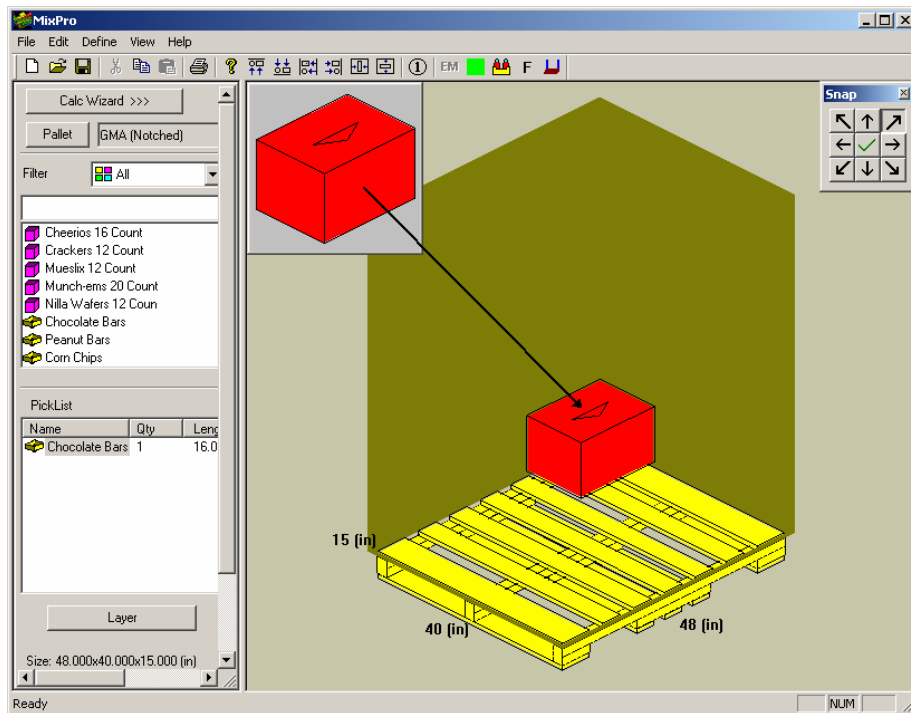


Click on the top face to rotate shipcase 90 degrees

**Note:** To remove/hide the selected shipcase in the g.o.d. window, click the [Esc] key on the keyboard.

7. To load the item onto the pallet, click on the image of the shipcase and drag it onto the pallet.

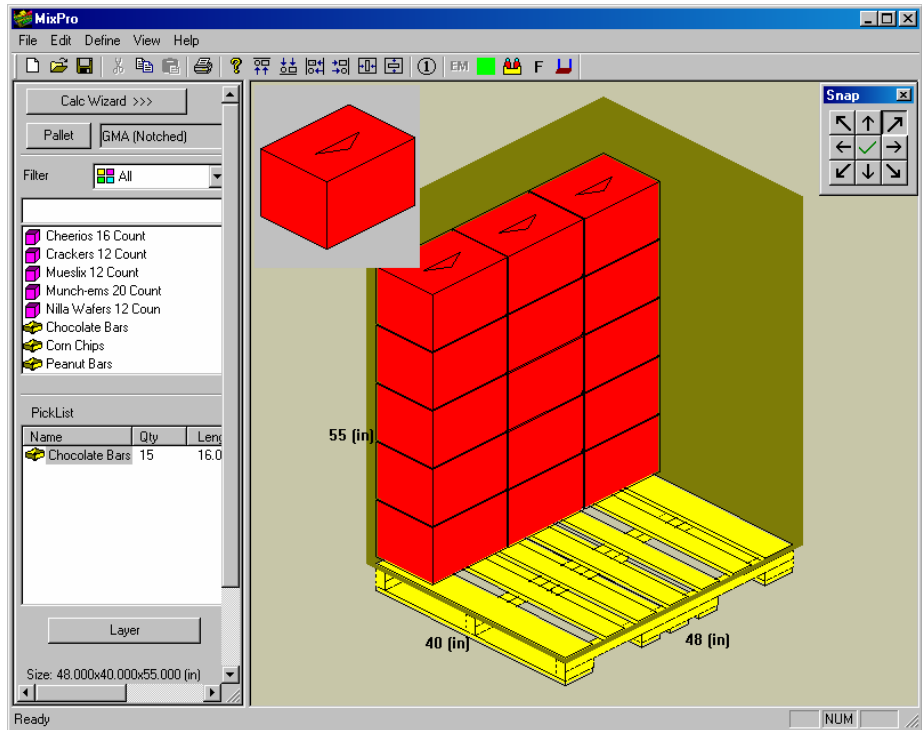
The system copies an image of the shipcase to the pallet area, as pictured here.



In the figure above, the shipcase automatically flushes against the top left corner of the pallet because of the default Snap feature.

**Note:** If needed, click on the green  $\checkmark$  which turns to a red X, to disable the Snap feature. In this way, you can place the shipcase anywhere on the pallet, without being aligned to any side or corner of the pallet.

8. Continue to load cases until you've loaded 15 cases of chocolate bars to the pallet, forming a wall along the backside of the pallet. Your unitload will look similar to the one pictured on the next page.

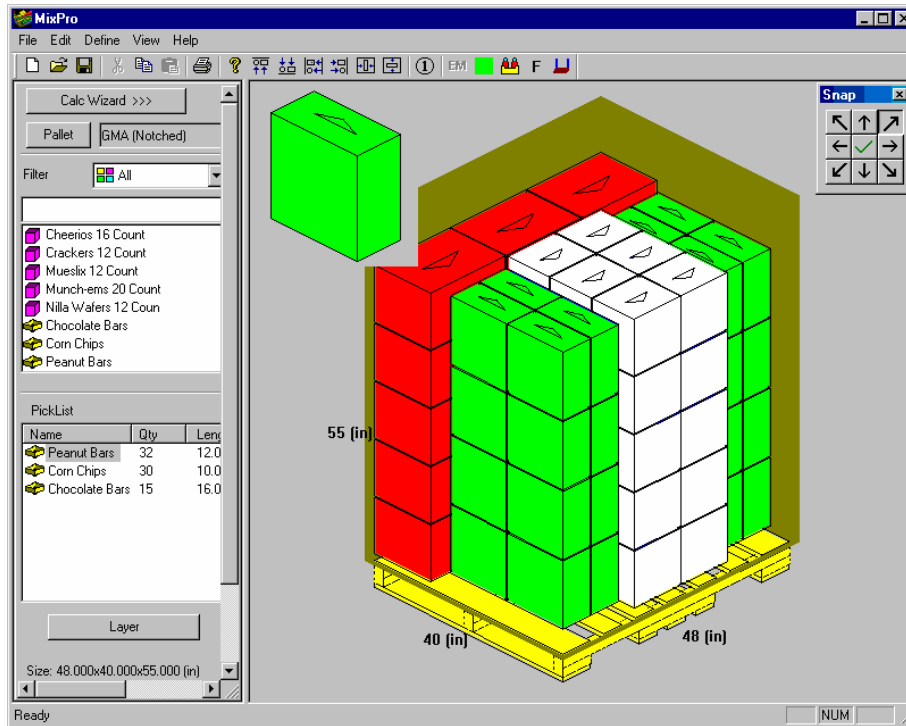


9. To begin adding the next item onto the pallet (the peanut bars), select it from the pick list. The case pictured in the g.o.d. window changes to the newly selected case.

Complete the mixed pallet load until the unitload contains the following items:

- ❖ 15 cases of chocolate bars
- ❖ 32 cases of peanut bars
- ❖ 30 cases of corn chips






When you've finished loading the three different shipcases, the unitload will look similar to the unitload pictured on the next page.








10. Now that all the shipcases are loaded onto the pallet, you can now align the unitload on the pallet as you like – to the top, bottom, left, right, etc. You can also display the labels on the various shipcases.

**Note:** The MixPro alignment feature works a little differently than in TOPS Pro. In MixPro, the alignment moves the entire load; you cannot select individual cases to align.

Notice the following buttons in the MixPro Pallet Editor Screen button bar:

- ❖  **Align Top Button:** Aligns the entire load to the top edge of the pallet.
- ❖  **Align Bottom Button:** Aligns the entire load to the bottom edge of the pallet.
- ❖  **Align Left Button:** Aligns the entire load to the left edge of the pallet.
- ❖  **Align Right Button:** Aligns the entire load to the right edge of the pallet.
- ❖  **Align Vertical Button:** Compacts the spacing to align the entire load in the center of the pallet vertically.

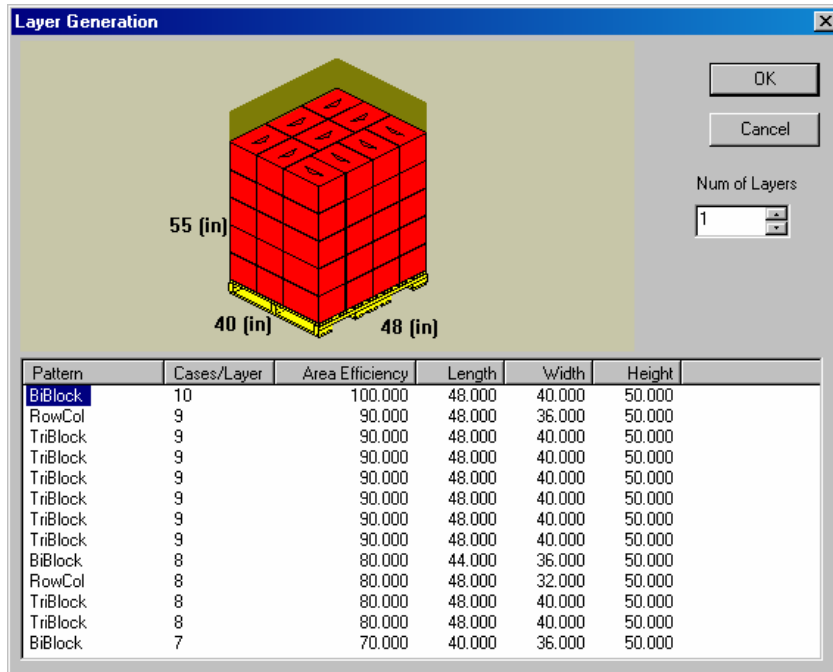
- ❖  **Align Horizontal Button:** Compacts the spacing to align the entire load in the center of the pallet horizontally.
- ❖  **Label Button:** Displays the labels on the shipcases. This is an on/off toggle feature.
- ❖  **Show Contents Button:** Clicks to show contents of any CASY trays.
- ❖  **Show Front Face Button:** Clicks to show the display face of the shipcases.
- ❖  **Add Corner Posts Button:** Adds corner posts to the unitload. You will define the width and thickness of the corner posts in the pop up dialog box.

11. When your load is aligned the way you want it, you're ready to work with the Print Preview feature, tailor the report, then print it.
12. Before closing MixPro, be sure to give this mixed pallet a name and save the file.

## Create a Mixed Pallet Using Layers

MixPro allows you to configure layers of shipcases on a pallet. To work with layer configurations, start from the MixPro Pallet Editor and follow these instructions.

1. Add your item to the PickList. In this example, we will start again with Chocolate Bars by double clicking the item in the shipcase list.
2. With the Chocolate Bars shipcase displayed in the g.o.d. window, click on the Layers button. The Layer Generation Screen appears, as pictured on the next page.

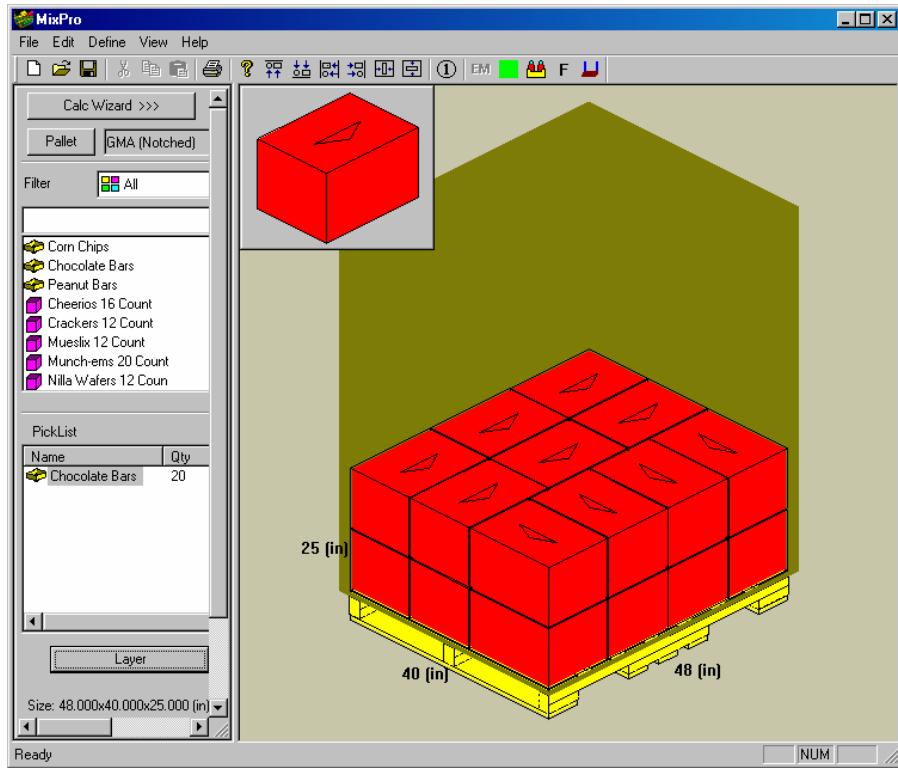


Notice the following about the Layer Generation Screen:

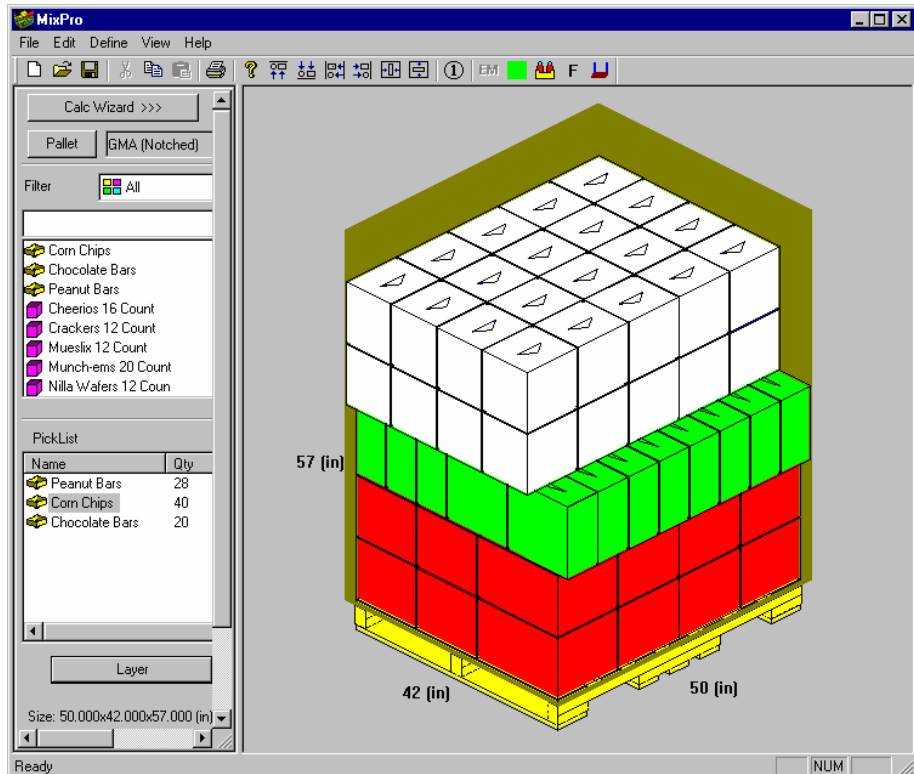
- ❖ A **list of layer configurations** is displayed in the lower portion of the screen. For each configuration, the screen displays pattern type, count (number of cases in a layer), area percentage, length, width and height.
- ❖ The **layer configuration display** shows an illustration of the selected configuration in the upper portion of the screen. This display also provides dimensions for length, width and height.
- ❖ The **Number of Layer box** allows you to specify the number of layers in the configuration.

**Note:** TOPS will limit the number of layers for each item based on the remaining space available on the pallet.

3. Select the layer configuration you want for the mixed pallet load. Here we will select the first BiBlock configuration as illustrated above.
4. Select the number of layers in the configuration to two (2).
5. Click on OK. The mixed pallet with two layers of chocolate bars will be displayed, as shown on the next page.



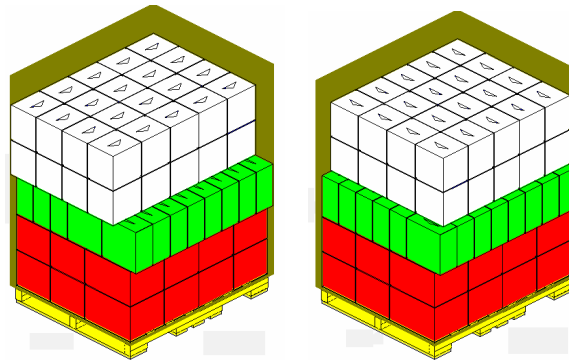
- Repeat steps 1-5 to add one layer of Peanut Bars and two layers of Corn chips to the pallet, with the final results as shown below.



## Layer Manipulations

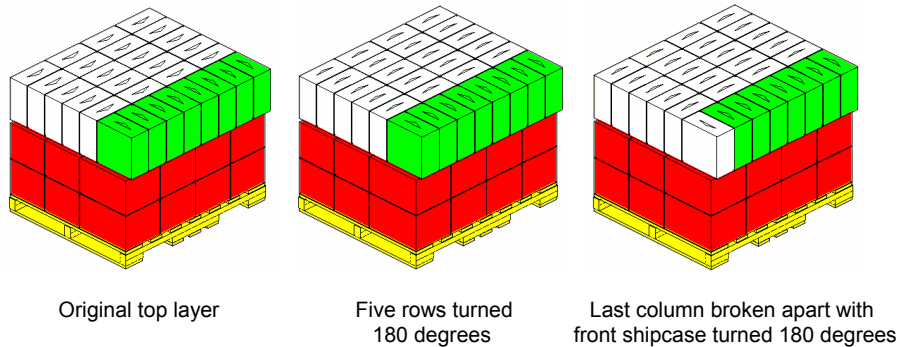
By right clicking the mouse while pointing to the different layers within the mixed pallet, you will see a menu with these functions:

- ❖ **Properties:** Provide statistics (shipcase name, length, width, height and weight) on the layer of item you are pointing to.
- ❖ **Rotate 90 degrees:** Where space permits, turn the referenced block 90 degrees as illustrated by the top two layers of the pallet below.



- ❖ **Rotate 180 degrees:** Turn the referenced block 180 degrees as illustrated on the top five rows of top layer below.

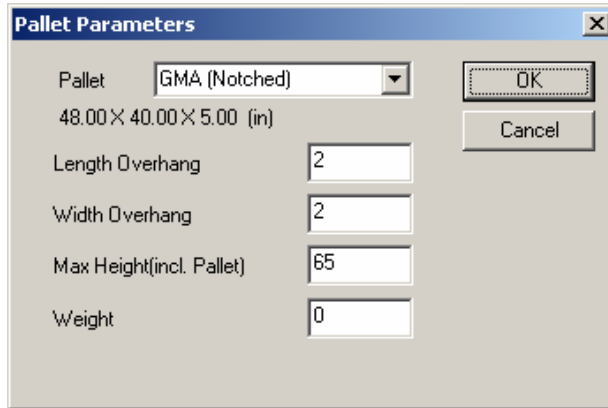
**Note:** Use this function to turn the front face of the shipcase to the outside of the mixed pallet to create pallet for display in club stores.



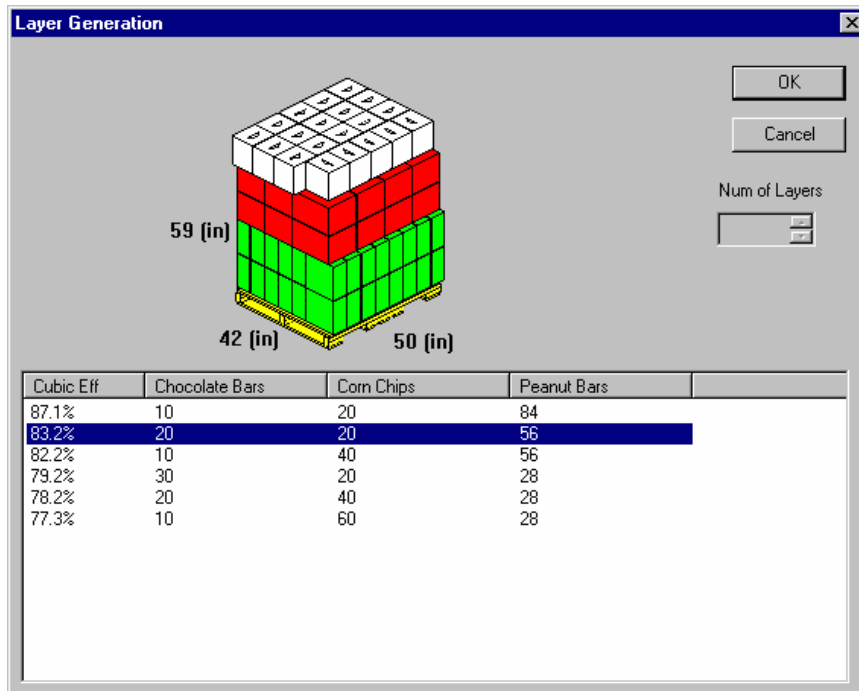
- ❖ **Break:** Break the placement of shipcases into individual shipcases. In the top layer of the illustration above, the top five rows are considered one placement and the last column another. We will break apart the last column placement and turn the front shipcase 180 degrees, with the result illustrated above.
- ❖ **Add Slipsheet:** Add a slip sheet on top of the up-most shipcase layer of the pallet.



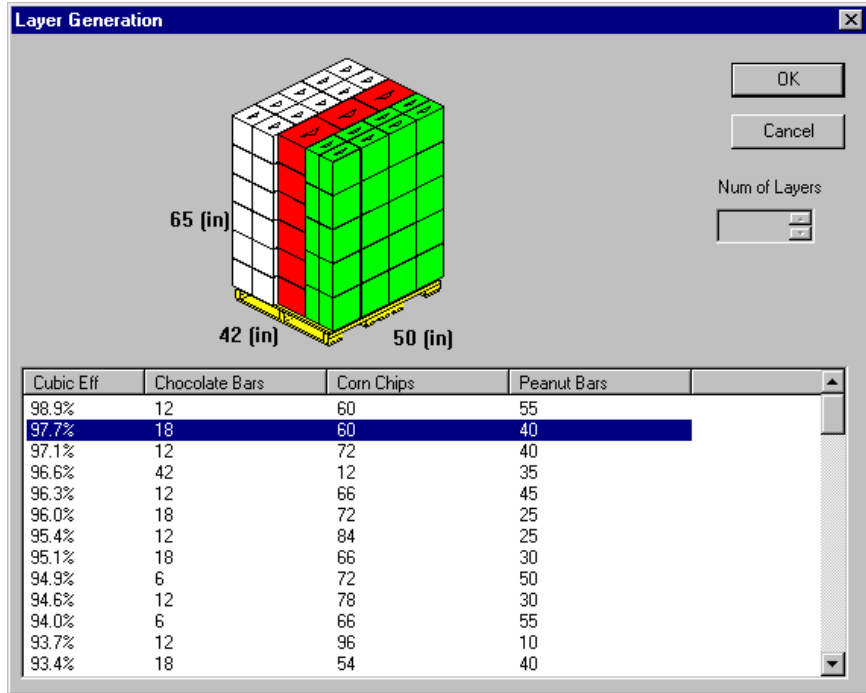
- Specify the pallet to be used for the mixed load by clicking on the Pallet button.
- At the Pallet Parameters dialog as shown below, specify any allowable overhangs and height restrictions. Click OK to close the dialog.



- Set the **Speed-Space** slide bar to a desired setting or keep it at the default value. This controls if MixPro optimizes calculation for speed or for space efficiency.
- When ready, click on the **Calc** button.
- MixPro will return a mixed pallet optimized by layer or column as specified by the users.

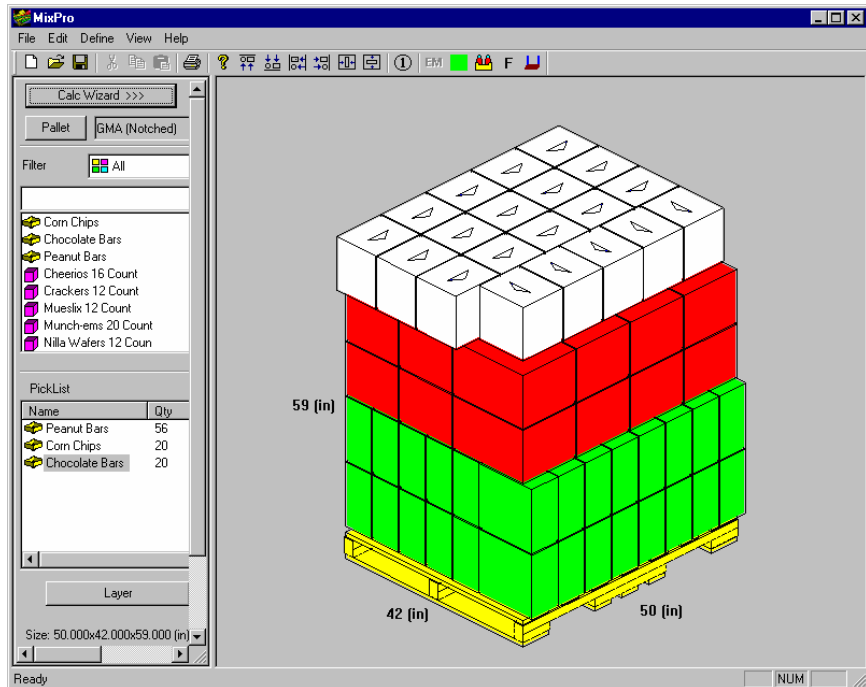


Mixed pallet optimized by layer



Mixed pallet optimized by column

11. You can scroll through the different solutions and pick the pattern that works best for you. Click OK and the selected mixed pallet will be displayed in the MixPro dialog as shown below.



Once in the MixPro Pallet Editor, you can perform functions on each layer and/or shipcase as described on page 6-12.

# Direct Email From MixPro Pallet

MixPro Pallet has an internal email feature that allows you to email a standard printout directly to another person who may or may not have TOPS Pro. When you email a report or analysis to someone, TOPS Pro automatically attaches the appropriate reports as JPEG files to a new email message using your default email application. To use the direct email feature, follow these instructions:

1. Work through the analysis to create the mixed pallet.
2. At the Menu Bar, go to the File Menu and select Print Preview.
3. You have a choice of the following report types:
  - ❖ **Load:** Picture of mixed pallet with unitload and pallet dimensions as well as contents of the load.
  - ❖ **Load (front/back):** Similar to the Load report but with the additional view of the back side of the unitload.
  - ❖ **By placement:** Report giving step by step illustrations on how the mixed pallet is created with each placement of shipcases.
  - ❖ **By Layer:** Report with step by step illustrations on how the mixed pallet is created by layer placement.
  - ❖ **By Edge:** Report with step by step illustrations on how the mixed pallet is created from the side of the pallet.
4. At the report preview screen, click on the Email button.

The system launches your default email application and prompts you to enter an address for the recipient, subject, etc., as you would for any normal email message. TOPS Pro attaches the appropriate analysis files to the email message, then sends the message to the recipient.

5. On the receiving end, the recipient must select all the attached files and save them to a common folder. From there, the recipient can view the report or analysis through most any Web browser or Microsoft Word.

## Tips for Working with Cases on a Pallet

- ❖ To add a second case to the pallet, hold down the Shift key and click on the first shipcase. To place the second case on top of the first case, Shift and click on top of the first case. To place the second case to the side of the first case, Shift and click on the side of the first case.
- ❖ If you've loaded a column, row or layer of cases on the pallet, you can add another column, row or layer with one click. For example, to add a layer of cases, hold down the Shift key and click on the top of the first layer. The system adds another layer on top of the first layer. To remove a layer of cases, hold down the Alt and Shift keys simultaneously and click on the layer.
- ❖ To remove (or delete) one or more cases from the pallet, click on the case(s) and drag it off the backside of the pallet (to the left). The case(s) completely disappear from the display.

To temporarily remove one or more cases from the pallet – you want to load it back later – click on the case(s) and drag it off the frontside of the pallet (to the right). The case(s) remain in view on the display.

- ❖ Use the Layer button to have MixPro calculate optional patterns for the selected shipcase.

