

Chapter 4: Publishing an Analysis

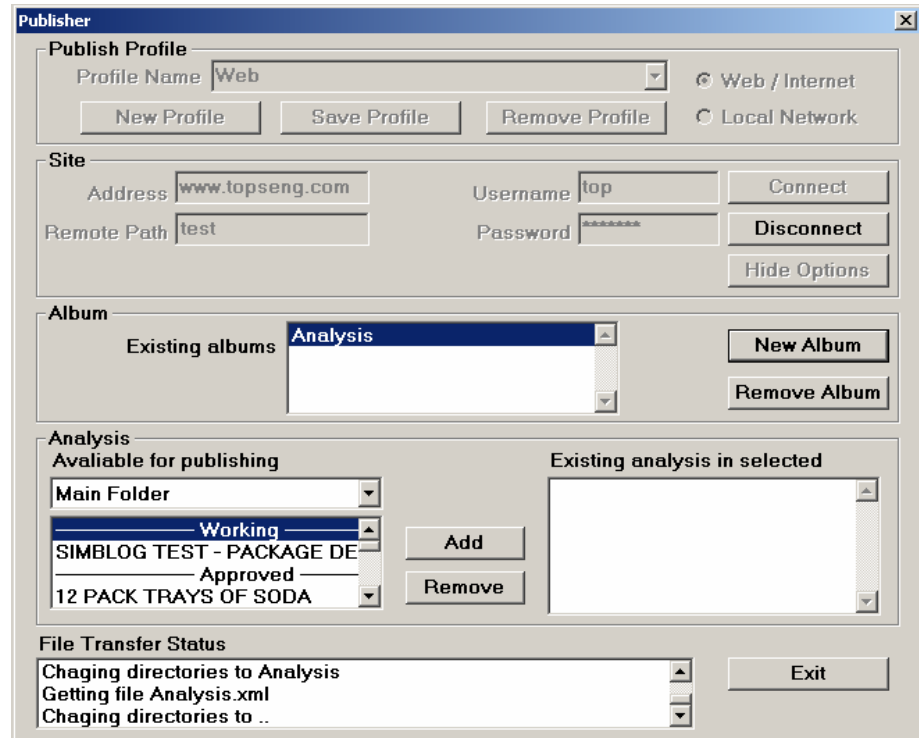
Introduction

TOPS Pro allows you to publish the results of an analysis to the Web or to a local network, thus allowing other people to view the analysis. With the Publish Analysis feature, analyses are collected into albums, which are created by the user to logically organize one or more analyses.

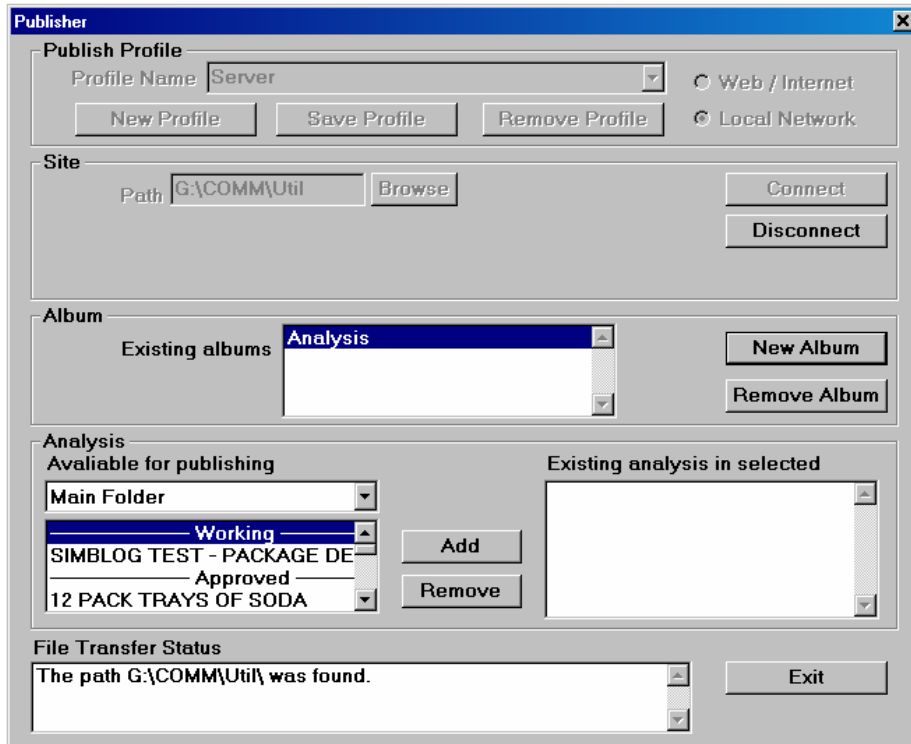
To publish an analysis to the Web or network, start from the Control Panel and follow these instructions:

1. Go to the Menu Bar and open the File Menu.
2. Select the Publish Analysis option, then select either the To Web or To Network option.

The Publisher dialog box appears in one of two forms, as pictured here.



Publisher to Web/Internet Option



Publisher to Local Network Option

The Publisher dialog box is organized into the following sections:

- ❖ **Publish Profile:** A profile contains information regarding the destination (web or local network) where analyses will be published. Creating a profile enables you to quickly recall the details of the published site.
 - **Profile Name:** Enter the name for a new profile (details of the profile will be entered under the Site section) or select an existing profile from the drop-down list.
 - **New Profile:** Click to create a new profile.
 - **Save Profile:** Click to save the Site information into the specified profile.
 - **Remove Profile:** Delete the selected profile from the database.
 - **Web/Internet or Local Network:** Specify whether the new profile is a web or local network location.

- ❖ **Site:** Specifies or displays the details of the publish location for the new or selected profile.

With the Web/Internet option selected, the Site section prompts you for the followings:

- **Address:** IP address or URL of the destination web site
- **Remote Path:** Name of the folder on the remote site where the analyses will be saved, if applicable
- **User Name and Password:** Authenticate your right to access the remote site

With the Local Network option selected, the Site section prompts you to enter a destination **Path**. Enter the directory path or click on the **Browse** button to specify a location on your local network.

Note: For specific Site information, please contact your IT Department.

- **Connect/Disconnect:** Click to connect to or disconnect from the selected remote location.
- ❖ **Album:** Published analyses are organized into albums. This section allows you to create a new album, select an existing album to which the selected analysis will be stored or remove an existing album.
 - ❖ **Analysis:** Allows you to select and add one or more analyses to be published as part of an album.
 - ❖ **File Transfer Status:** Displays a list of FTP transactions (when publishing a profile to the Web).
3. In the Profile Name field, use the drop-down list to select an existing profile that will be used to publish the analysis. In this case, previously saved Site information for the selected profile will be recalled.

Note: To create a new profile, click on the New Profile button and enter the name of the new profile in the Profile Name field.

4. In the Site section, enter information for one of two options for a new profile: If you're publishing to the Web, enter the Address, Remote Path, User Name and Password. If you're publishing to a local network, browse for and select the path.
5. After entering Site information, click on the Connect button. TOPS Pro establishes a connection to the specified site, then populates the Album section with a list of existing albums stored on the site.
6. In the Album section, you can select an existing album from the drop-down list to add new analyses or to create a new album.

To create a new album, click on the New Album button and enter the name at the pop-up dialog box.

7. In the Analysis section, go to the “Available for Publishing” list, select the analysis you want to publish, then click on the Add button. Repeat this step for each analysis you want to add to the album.

To remove a selected analysis from the album, highlight the analysis in the “Existing Analysis is Selected” list and click on the Remove button.

TOPS Pro retrieves images from the selected analysis, converts the images to XML and HTML files, and sends the files to the specified location in the profile.

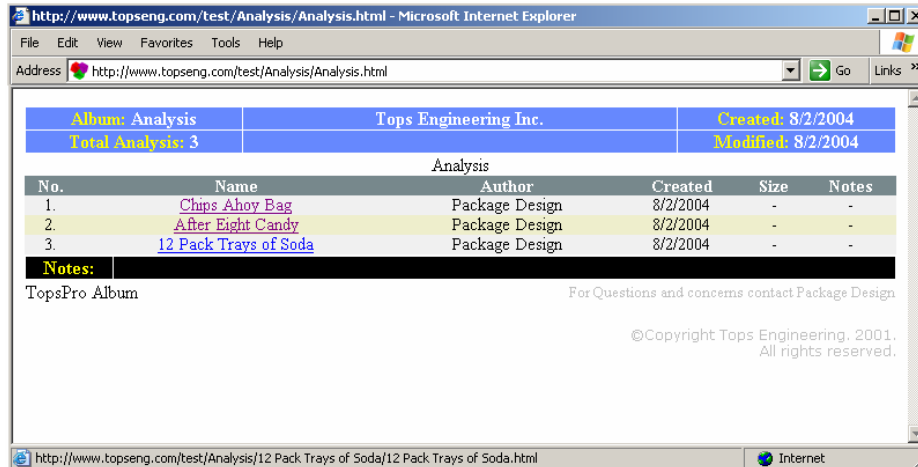
Note: When publishing to the Web, TOPS Pro displays a log of FTP transactions in the File Transfer Status window. If there is an error publishing to the Web, this log provides information that might identify the problem.

Viewing the Published Analyses

To view the analyses published to the web, enter the following at the web browser address field - `http://URL/FolderName/AlbumName.html` where

- ❖ **URL** is the web address or IP address for the site as specified in the Site information section of the Publisher dialog box
- ❖ **FolderName** is the optional Remote Path specified under Site Information
- ❖ **AlbumName** is the name of the Album containing the analyses as specified under the Album section of the Publisher dialog box

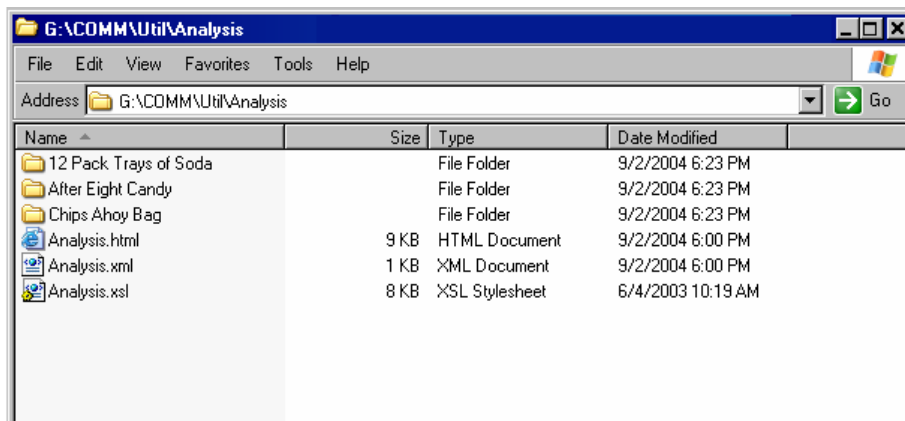
The browser will be updated to open the specified html file as illustrated on the next page. To view any analysis, just click on the Name to open the report.



Published Analysis list on the web

To view the analyses published to the local network, open the Windows Explorer and browse to the folder as specified in the Publish dialog box.

Tip: Create a shortcut to the Analysis.html file so you can access the published album with just one simple click.



Published Analysis list on the web

