

Getting Started

Introduction

This chapter covers the following topics to get you up and running on the MaxLoad Pro system.

- ❖ System Requirements/Specifications
- ❖ Instructions to Install MaxLoad Pro
 - On a Standalone PC
 - On a Network
 - Setup Client Machines
- ❖ Getting Started
- ❖ Registration Information
- ❖ Add a New User
- ❖ Uninstall and Move

By the end of this chapter, you should be logged into the system and ready to use the software.

System Requirements/Specifications

To install and run the MaxLoad Pro software, your system needs to meet the following requirements:

- ❖ **Platform:** All versions of Windows (95, 98, 2000, NT, and XP)
- ❖ **Network:** Any network is compatible. MaxLoad Pro is not network-protocol dependent; it only needs a file server.
- ❖ **Processor Required:** Any processor capable of running the installed platform.

Recommended: Pentium 133 MHz or better

- ❖ **Hard Disk Space Required:** 42 MB

- ❖ **RAM Required:** 32 MB

Recommended: 64 MB or more

- ❖ **Video Required:** 800 x 600 at 16 bit colors

Recommended: 640 X 480 at 256 colors

Network Information: MaxLoad Pro is installed from a client to the file server. MaxLoad Pro and DirectX usually do not take more than 50 MB space on the file server, depending on the database size. DirectX is copied to the file server for install on client(s) that do not have DirectX. Most Windows 98, 2000, XP, and NT clients come with DirectX. Individual workstation's hard disk space requirements will vary. They will have the support files for DirectX and DAO installed that their machine lacks and the program will be run from the network.

The software internally manages concurrent user licensing. No third party metering of the software is required. Licensing can support an unlimited number. The software has been tested with up to 30 concurrent users. Provisions are in place for distinguishing between viewers of old/completed work and generating new work. Those who access the software in View Only mode do not count against the concurrent user limit.

Software Design: The MaxLoad Pro uses 32-bit code. Work is stored as database records instead of individual files, using DAO (MS Access).

Installing MaxLoad Pro

This section will walk you through the installation process and get you logged into the system. It is recommended that a person in the Information Technology department installs the TOPS software.

Note: If during the installation an error message occurs, please make a note of the error message and continue with the installation until it is finished. Then contact TOPS Technical Support for further instructions.

To install the MaxLoad Pro software, follow these instructions:

On a Standalone PC

1. Make sure you have administrative rights to the workstation on which you wish to install MaxLoad Pro.
2. Close all other applications on that workstation.
3. Start the installation process by inserting the TOPS CD in a CD drive. If you have auto-play enabled for your CD drive, the setup program will run automatically. Else, click on the Windows Start button and select Run.

System Response: The Run dialog box appears and prompts you to enter a directory path and the program to run.

4. Type D:\SETUP and hit the Enter key on your keyboard (where D: is the CD drive). If your CD drive is designated with another alphabet like E or F, please change it accordingly.
5. A window will open for you to select the software you want to install. Select MaxLoad Pro for 32-bit Windows.
6. A new window prompting you to select Sale version or Demo version of the software will open.
7. Select Install Sale (With Floppy License Disk) if you received a floppy disk with the software package. If you did not receive a floppy disk, select Install Sale (Without Floppy Disk) and proceed to 9.
8. Insert the original key license floppy license disk in the floppy drive and click Next.
9. Click Next on the “Welcome to MaxLoad Pro v2.70 Setup dialog box”.

10. On the “Choose Common Component Location” dialog box browse out to the location where you wish to install the software and click Next. By default TOPS installs the software in C:\Programs Files directory.
11. In the “Choose Default Software Settings” dialog box, select the language, units, and date format you want to install with the software.
12. In the “Start Installation” dialog box, make sure that your company name, software type, and license information is correct and click “Next”.
13. Once the software is installed, click Finish.
14. Call TOPS Technical Support if the software was installed without a floppy license diskette. Execute MaxLoad Pro by going to Start | Programs | Tops for Windows Apps | MaxLoad Pro.

On a Network

1. Install MaxLoad Pro from a client PC to the server. Make sure you have administrative rights to both the server and the client machine.
2. Close all applications on that workstation.
3. If you are installing the software for the first time on the network, then permanently map a network drive to the location on the server where MaxLoad Pro will be installed. Else continue with step 4.
4. Start the installation process by inserting the TOPS CD in a CD drive. If you have auto-play enabled, the setup program will run automatically. Else click on the Windows Start button and select Run.

System Response: The Run dialog box appears and prompts you to enter a directory and program.

5. Type D:\SETUP and hit the Enter key on your keyboard (where D: is the CD drive). If your CD drive is designated with another alphabet like E or F, please change it accordingly.
6. A window will open for you to select the software you want to install. Select MaxLoad Pro for 32-bit Windows.
7. A new window prompting you to select Sale version or Demo version of the software will open.

8. Select Install Sale (With Floppy License Disk) if you received a floppy disk with the software package. If not, select Install Sale (Without Floppy Disk) and proceed to step 10.
9. Insert the original key license floppy license disk in floppy drive and click Next.
10. Click Next on the “Welcome to MaxLoad Pro v2.70 Setup dialog box”.
11. On the “Choose Common Component Location” dialog box browse across the mapped network drive to install the software on the server.
12. In the “Choose Default Software Settings” dialog box select the language, units, and date format you want to install with the software.
13. In the “Start Installation” dialog box make sure that your company name, software type, and license information is correct and click “Next”.
14. Once the software is installed, click Finish.
15. Call TOPS Technical Support, if the software was installed without a floppy license diskette. Else execute MaxLoad Pro by going to Start | Programs | Tops for Windows Apps | MaxLoad Pro.

Setup Client Machines

All users should have Full Control (read and write) access to the TOPSAPPS directory on the network

1. Make sure you have administrative rights to the workstation you wish to set up MaxLoad Pro on.
2. Permanently map a network drive to the location on the server, where you installed MaxLoad Pro.
3. Browse across the mapped network drive to the max2pro directory. Run the NETSETUP.EXE file for a LAN (Local Area Network) install and WAN (Wide Area Network) install, respectively.
4. NETSETUP / WANSETUP will verify that there is a valid version of DirectX installed on the local PC, create a local Maxload2.ini file and place it in the Windows or WinNT directory. It then creates the required shortcuts for the software and place those shortcuts on the desktop and under Start | Programs | TOPS for Windows Apps Menu.

Getting Started

Once the software is installed, double-click on the MaxLoad Pro icon.

System Response: The Login screen appears, as pictured below.

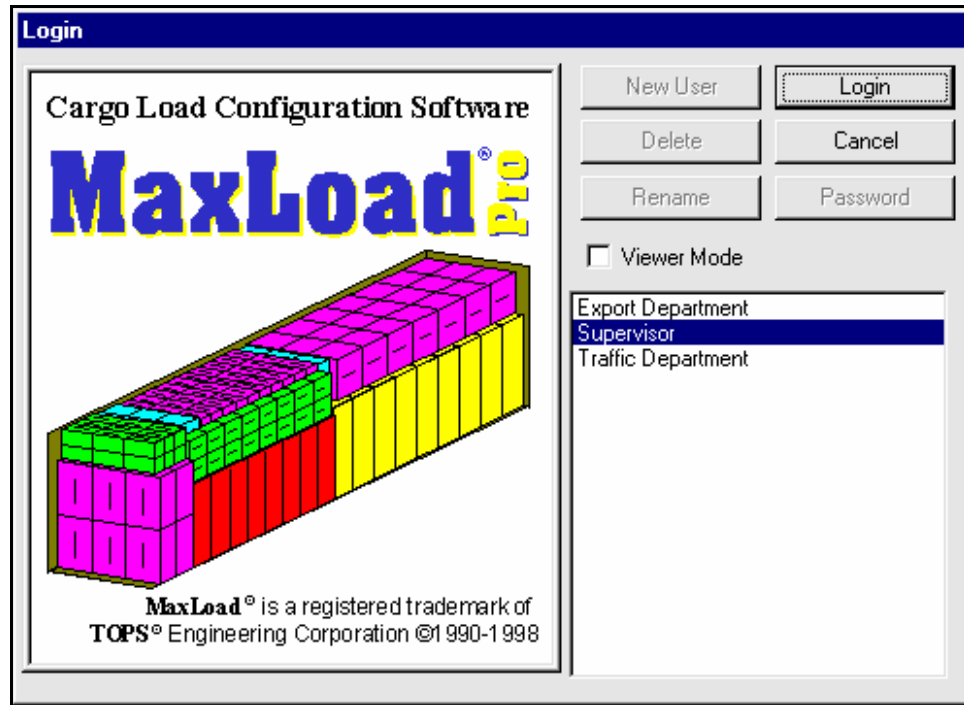


Figure 1.1 Login Screen

Notice the user list in the bottom right corner of the screen; this list shows three users already set up in the system: Export Department, Supervisor and Traffic Department.

Select the user group you belong to and click on the Login button.

Note: The Supervisor login is password-protected. Login as a Supervisor only if you're performing Configuration functions. For more information, please refer to Chapter 11, Configuration.

System Response: The MaxLoad Pro Control Center appears, as pictured on the next page.

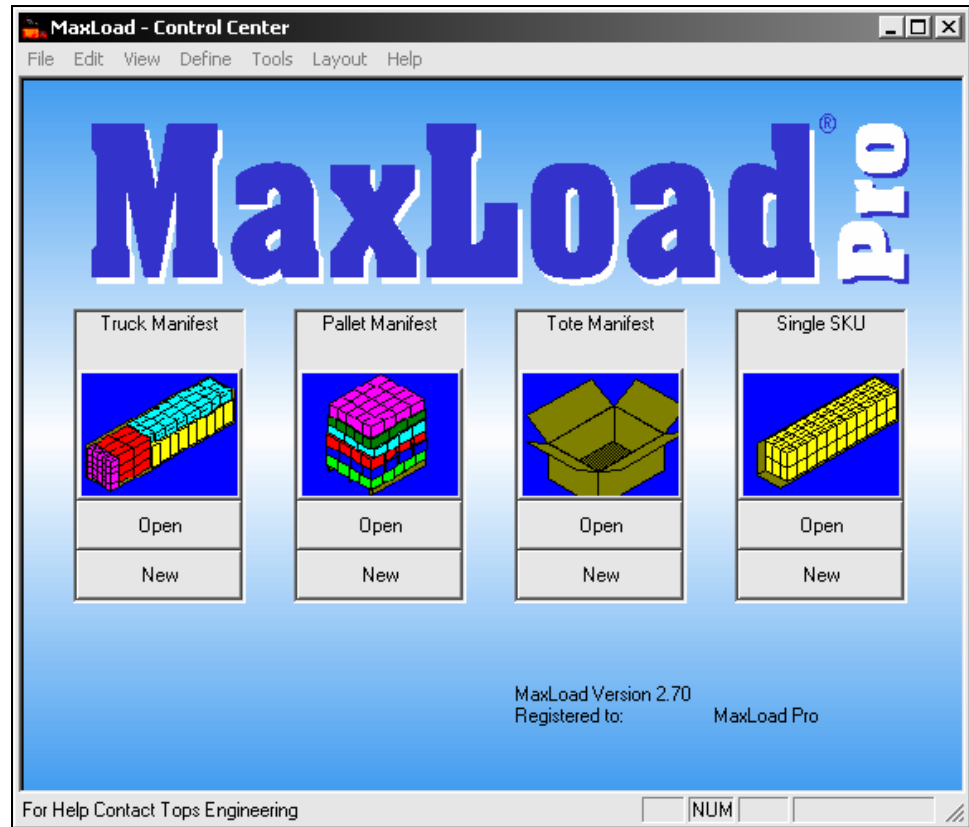


Figure 1.2 MaxLoad Pro Control Center

The MaxLoad Pro Control Center serves as your starting point in the system. From the Control Center, you can start or create one of four types of manifests: Truck, Pallet, Tote and Single-SKU.

The MaxLoad Pro Control Center is discussed in Chapter 2, The Basics.

The Truck Manifest is discussed in Chapter 4, Loading a Truck Manifest.

The Pallet Manifest is discussed in Chapter 5, Loading a Pallet Manifest.

The Tote Manifest is discussed in Chapter 6, Loading a Tote Manifest.

The Single-SKU manifest is discussed in Chapter 7, Loading a Single-SKU Manifest.

Registration Information

The About MaxLoad Pro information box, pictured below, provides important information regarding your MaxLoad Pro license. To access this box, open the Help menu and select About MaxLoad.

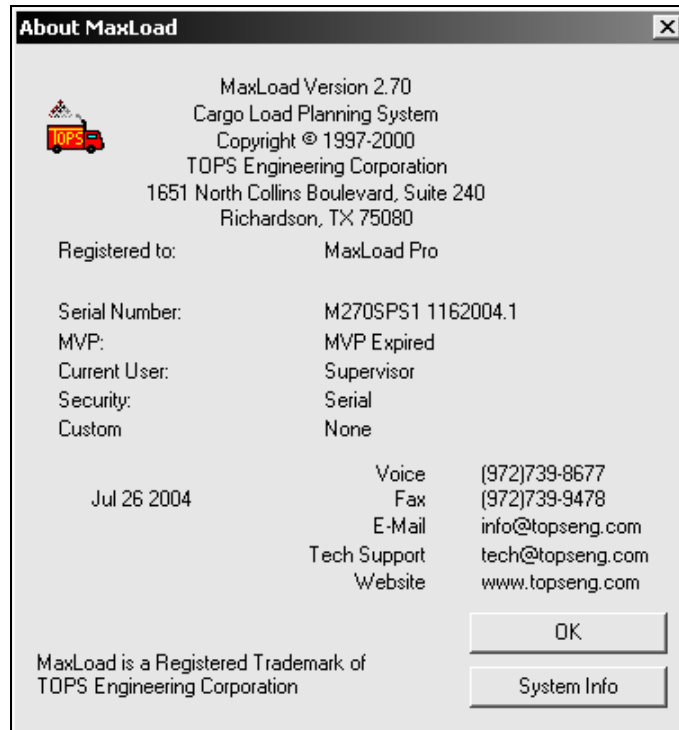


Figure 1.3 About MaxLoad Information Box

The About MaxLoad information box displays the following information:

- ❖ **MaxLoad Pro Version:** Shows the version of MaxLoad Pro you are currently running.
- ❖ **Registered to:** The name of the company or organization the software is licensed to.
- ❖ **Serial Number:** This is the software serial number. It is unique for every customer. Whenever an issue is reported to technical support, the serial number is the first thing needed. This allows TOPS tech support to look up the customer and version information in the customer database. This number even tells the number of users that can access the software at one time.
- ❖ **Current User:** Lists the login name of the current user.

- ❖ **Security:** Displays the security method used to install the license.
- ❖ **Custom:** Reflects if any custom programming was done.
- ❖ **Date:** The build date of this executable.
- ❖ **TOPS Contact Info:** TOPS Engineering Corporation address, phone number, e-mail address, and website address.

Notice that the About MaxLoad information box contains two buttons:

- ❖ **OK Button:** Closes the About MaxLoad Pro information box.
- ❖ **System Info button:** Displays the System Information box, as pictured below which provides a range of technical system information and allows you to print, save or email the system information.

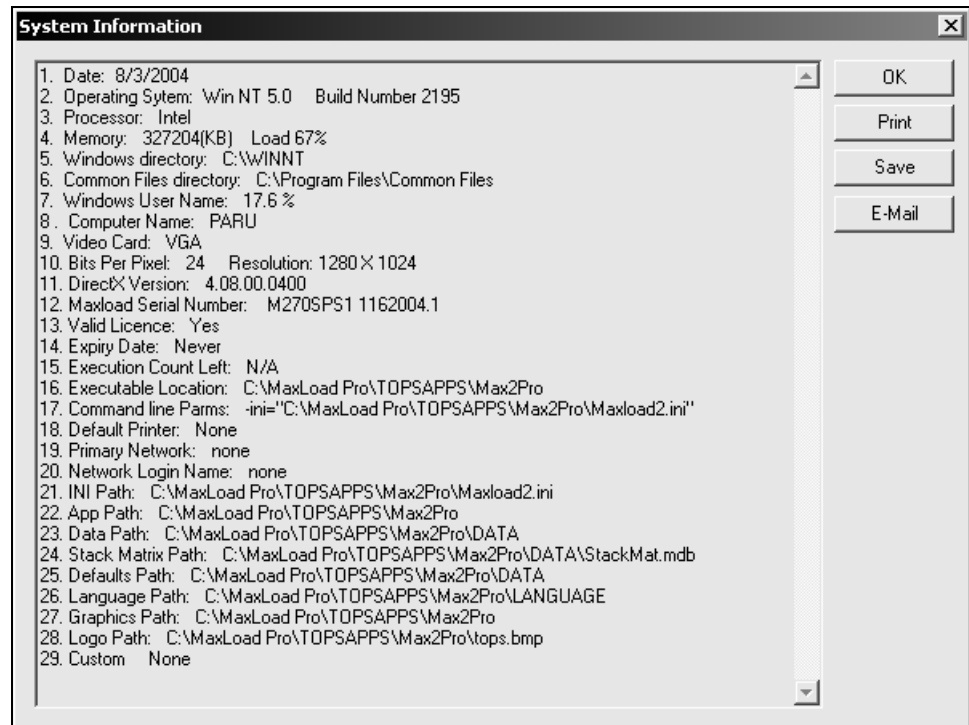


Figure 1.4 System Information Box

The System Information box displays the following information:

- ❖ **Date:** Current system time.
- ❖ **Operating System:** Machine operating system and build number.
- ❖ **Processor:** Processor manufacturer.

- ❖ **Memory:** Amount of memory being used.
- ❖ **Windows Directory:** Operating system's default directory, usually Windows or WINNT.
- ❖ **Common Files directory:** Location of System (Windows) common files folder.
- ❖ **Windows User Name:** Name of the user currently logged into the Windows system.
- ❖ **Computer Name:** Machine name as it appears on the LAN.
- ❖ **Video Card:** Style of video adapter.
- ❖ **Bits Per Pixel:** Screen color depth and resolution.
- ❖ **DirectX Version:** It tells the version of directX being used.
- ❖ **MaxLoad Serial Number:** Software serial number.
- ❖ **Valid License:** If the user is running a sale or demo license.
- ❖ **Expiry Date:** This applies to MaxLoad Pro demo. Reflects the date MaxLoad Demo will expire.
- ❖ **Execution Count Left:** This applies to MaxLoad Pro Demo. Reflects the number of executions left before the demo expires.
- ❖ **INI Path:** INI path points to the location of the maload2.ini file. Maxload2.ini file tells the software where to find the data, license, and other required files.
- ❖ **App Path:** Points to the location of the license files.
- ❖ **Data Path:** Points to the location of the max2pro\data directory.
- ❖ **Stack Matrix Path:** Location of the StackMat.mdb (data directory).
- ❖ **Defaults Path:** Location of the Defaults.mdb (data directory).
- ❖ **Language Path:** Location of the language directory. Stores all language files.
- ❖ **Graphics Path:** Location of the *.wmf file used by XML.
- ❖ **Logo Path:** Location where the company logo is saved.

- ❖ **Default Printer:** Reports the default printer being used.
- ❖ **Primary Network:** Type of the network the user logs into.
- ❖ **Network Login Name:** It is the username that the user logs in under onto the network.
- ❖ **Custom:** Reflects if any custom programming was done.
- ❖ **Command Line:** Shows any command line parameters currently being used.
- ❖ **Language Path:** Location of the language directory.

Add a New User to the System

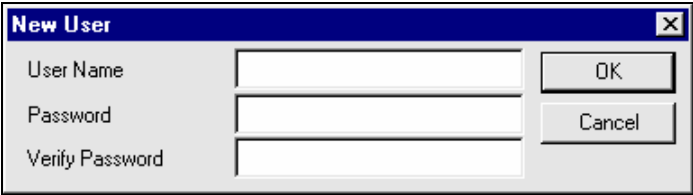
To add your name or department to the list of user names, follow these instructions:

1. Login as a Supervisor. The default password is “tops software” and is case insensitive.
2. Access User Login from the File menu.

System Response: The Login dialog box appears.

3. Click on the New User button.

System Response: The New User dialog box appears, as pictured below.



The image shows a standard Windows-style dialog box titled "New User". It features a blue title bar with the text "New User" and a close button (X) on the right. The main area of the dialog box is light gray and contains three text input fields stacked vertically. The first field is labeled "User Name", the second "Password", and the third "Verify Password". To the right of these input fields are two buttons: "OK" and "Cancel".

Figure 1.5 New User Dialog Box

4. In the User Name field, type in the new user name.

Note: The next two fields Password and Verify Password are optional fields. Set a password only if you intend to use MaxLoad Pro in a more secure way.

5. In the Password field, type in the new user's password.
6. In the Verify Password field, type in the new user's password again.
7. Click on OK.

System Response: MaxLoad Pro adds the new user to the system and returns you to the Login screen. Notice that the user list now displays the name of the new user.

Congratulations! At this point, the installation is complete and you've logged into the system. Now you're ready to work in MaxLoad Pro.

Uninstalling and Moving MaxLoad Pro

The MaxLoad Pro software is designed with an authorization scheme that enforces the MaxLoad Pro licensing system. You *must* uninstall the license back to original MaxLoad Pro license floppy diskette if:

- ❖ You want to move the *same version* of MaxLoad Pro software to another machine
- ❖ You are getting a new computer / hard disk
- ❖ You are upgrading the version of windows

To uninstall and move MaxLoad Pro follow the steps listed below

1. Uninstall license. If you purchased an e-license skip Step1 and call TOPS Technical Support after completing steps 2 and 3.

- ❖ Login to MaxLoad Pro as any user.
- ❖ Once logged in, access Adjust Authorization dialog box from the Help menu.

System Response: The Adjust Authorization dialog box appears, as pictured on the next page.

- ❖ Insert original MaxLoad Pro key floppy license diskette into the floppy drive.
- ❖ Click 'Uninstall To Floppy'.

System Response: MaxLoad Pro moves the authorization from the hard drive to the diskette and issues a message that the move is complete. At this point, the diskettes are like new and can be used to install MaxLoad Pro on any machine.

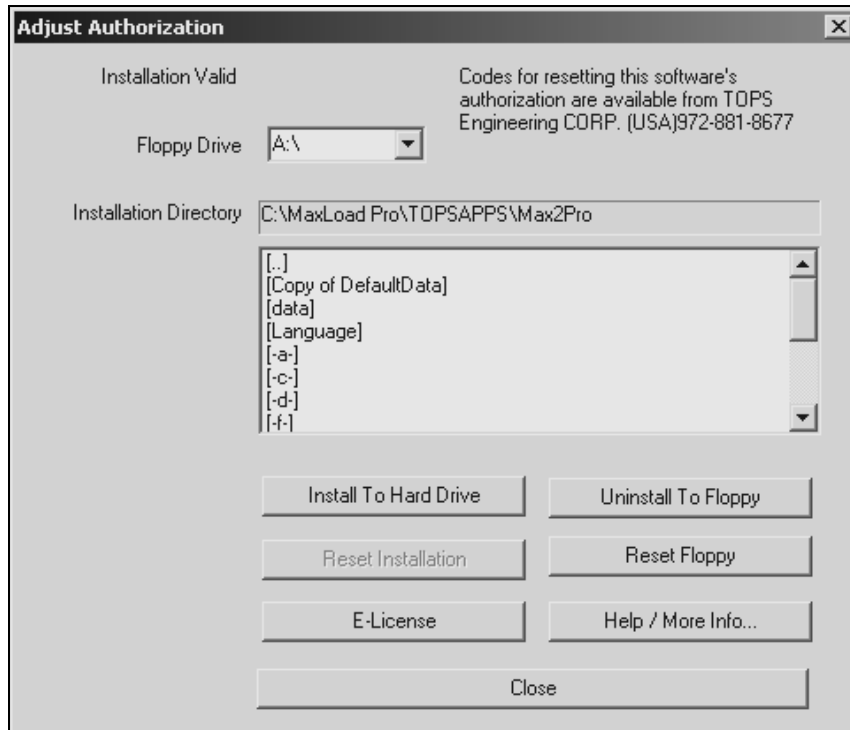


Figure 1.6 Adjust Authorization Dialog Box

2. Install the software on the new machine using the CD and floppy license diskette. Follow the installation instructions at the beginning of the chapter.
3. By default, MaxLoad Pro stores all its data in a folder named 'data' which resides under the Max2Pro directory. Move data over to the new Max2Pro directory. This step is optional. Follow this only if you want to carry over the manifests, SKUs, and other data defined in MaxLoad Pro over to the new installation.