

## NETWORK INSTALLATION INSTRUCTIONS FOR MAXLOAD<sup>®</sup> PRO

(See the other side for Client Machine Setup)

**Please Note:** It is recommended that a person in your Information Technology department install the TOPS software.

- ◆ Install MaxLoad<sup>®</sup> Pro from a client PC to the server. Make sure you have administrative rights to both the server and the client PC
- ◆ Close all applications on that workstation
- ◆ Permanently map a network drive to the server's install directory, where you wish to install MaxLoad<sup>®</sup> Pro
- ◆ Start the installation process by inserting the TOPS CD in CD drive. If you have auto-play enabled the setup program will run automatically. Otherwise, go to Start | Run Type D:\SETUP and hit <enter> (where D is the CD ROM)
- ◆ A window will open for you to select the software you want to install. Select MaxLoad<sup>®</sup> Pro for 32-bit Windows
- ◆ Next window prompting for you to select sale or demo version of the software will open. Select Install Sale and insert the original MaxLoad<sup>®</sup> Pro floppy diskette in floppy drive
- ◆ When it prompts you for an install location browse across the mapped drive to the server's install directory
- ◆ Follow the prompts and complete the installation process
- ◆ Execute the MaxLoad<sup>®</sup> Pro by going to Start | Programs | Tops for Windows Apps | MaxLoad Pro (Net)

**Note:** If during the installation an error message occurs, please make note of the error and continue with the installation until it is finished. Then, call TOPS Tech Support at 972.739.8677

### System Requirements

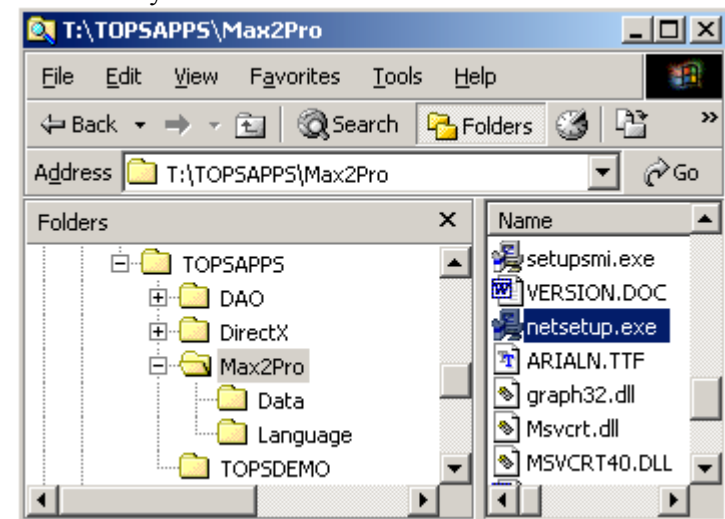
- ◆ Computer: PC with at least a Pentium Processor
- ◆ Operating System: Windows 95 / 98/ 2000 / XP / NT
- ◆ Processor: 133 MHZ Pentium or better
- ◆ RAM: 32 MB (recommended 64 MB)
- ◆ Disk Space: 42 MB
- ◆ Video: 640 X 480 @ 256 colors  
(800 X 600 @ 16 bit color recommended)

## SETTING UP ADDITIONAL WORKSTATIONS FOR MAXLOAD<sup>®</sup> PRO

(See the other side for Network Installation Instructions)

**Note:** All users should have full read / write access to the Max2Pro directory.

- ◆ Make sure you have administrative rights to the workstation, you wish to setup MaxLoad<sup>®</sup> Pro
- ◆ Permanently map a network drive to the location on the server, where you installed MaxLoad<sup>®</sup> Pro
- ◆ Then browse across the mapped network drive to Max2Pro directory and run the NETSETUP.EXE file



- ◆ Netsetup will verify that there is a valid version of Direct X installed on Local PC, create a local MAXLOAD2.INI file and places it in the Windows or WinNT directory. It will then create required shortcuts to the software and place those on the Desktop and under Start | Programs | TOPS for Windows Apps menu

### TOPS ENGINEERING CORPORATION

#### Total Optimization Packaging Systems

1651 North Collins Boulevard • Suite 240 • Richardson, Texas 75080

(USA) 972.739.8677 • (FAX) 972.739.9478 • www.topseng.com • tech@topseng.com