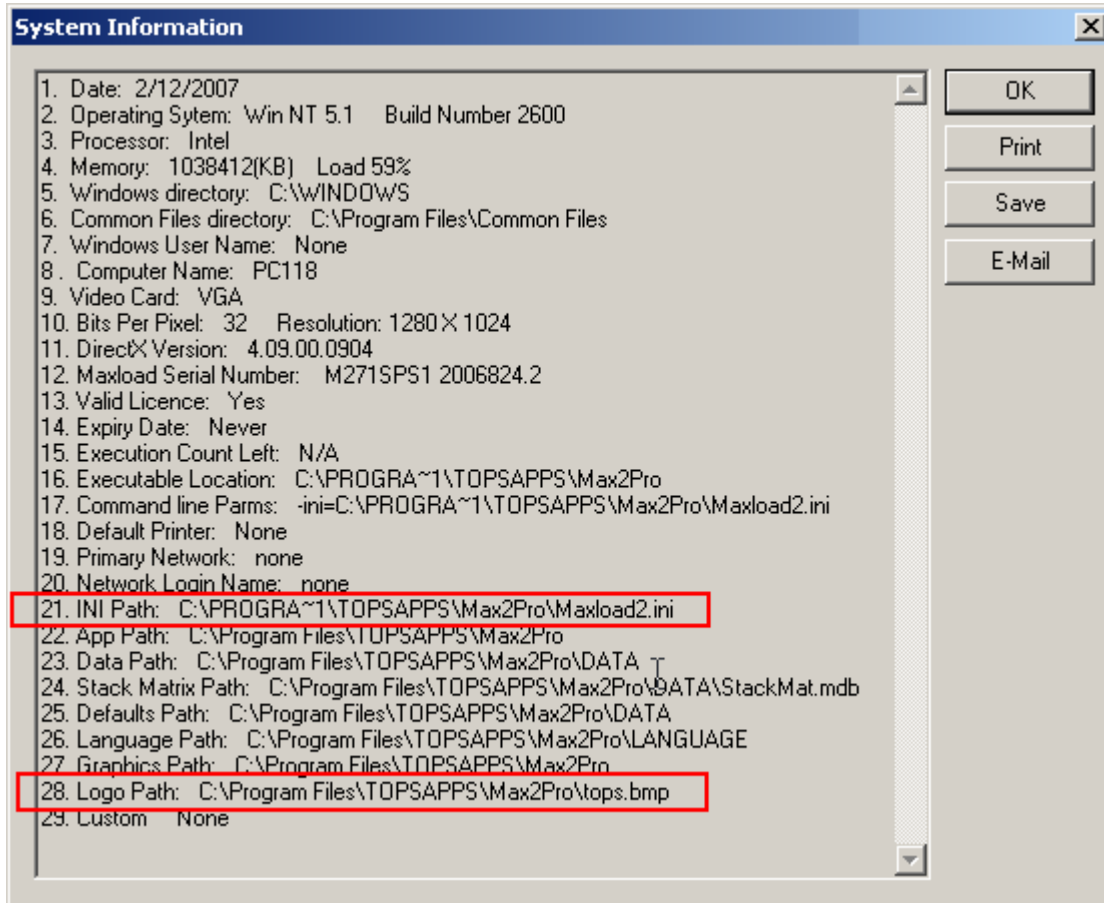


## Changing Logo in Reports within MaxLoad Pro

The logo to be used in reports within MaxLoad Pro is defined in the “maxload2.ini file”. To find out where the INI or the logo file resides, go to MaxLoad Help Menu, select About MaxLoad and click the System Info button.

The System Information dialog box, as shown below, lists the various information regarding your MaxLoad license.



Using Windows Explorer, browse to the folder where maxload2.ini resides and open the file using any editor. The sixth line down the [Maxload] section is where the file to be used as logo will be specified.

```
[Maxload]
AppPath=C:\Program Files\TOPSAPPS\Max2Pro
DBPath=C:\Program Files\TOPSAPPS\Max2Pro\DATA
DefaultsPath=C:\Program Files\TOPSAPPS\Max2Pro\DATA
LanguagePath=C:\Program Files\TOPSAPPS\Max2Pro\LANGUAGE
GraphicsPath=C:\Program Files\TOPSAPPS\Max2Pro
LogoPath=C:\Program Files\TOPSAPPS\Max2Pro\tops.bmp

Version=2.71
User=Export Department
MultiPrint=22015
ShowLabels=FALSE
```

**TOPS ENGINEERING CORPORATION**  
275 W. Campbell Road, Suite 600; Richardson, Texas 75080 USA  
(USA) 972.739.8677 (FAX) 972.739.9478 www.topseng.com tech@topseng.com

To remove the TOPS logo from the reports, delete the file name (tops.bmp) from the line as shown here and make sure to save the maxload2.ini file.

```
LogoPath=C:\Program Files\TOPSAPPS\Max2Pro\
```

If you'd like to use another logo on the reports, refer the filename and the path of the new graphics in the Logopath line. For example, to replace the TOPS logo with "mylogo.bmp" stored in d:\mygraphics\logos\ folder, change the logopath line as illustrated below and save the maxload2.ini file.

```
LogoPath=D:\mygraphics\logos\mylogo.bmp
```

You will have to restart MaxLoad in order to see the new logo in the reports.